



TASMANIAN STATISTICAL INDICATORS

EMBARGO: 11:30AM (CANBERRA TIME) TUES 8 MAY 2001

CONTENTS

	<i>page</i>
Notes	2
Main features	3
List of tables	7
SUBJECT AREAS	
1 Population and demography	9
2 Labour force	10
3 Wages and prices	18
4 Production	24
5 Primary industry	25
6 Building	29
7 Finance	30
8 Tourism	32
9 Transport	34
10 Retail trade	35
11 Overseas trade	36
12 Australia and State comparisons	38
13 Tasmanian Statistical Divisions comparisons	40
ADDITIONAL INFORMATION	
Map: Tasmanian Statistical Divisions	42

- For further information about these and related statistics, contact the National Information Service on 1300 135 070 or Jackie Saarinen on Hobart 03 6222 5812.

NOTES

FORTHCOMING ISSUES

<i>ISSUE</i>	<i>RELEASE DATE</i>
June 2001	8 June 2001
July 2001	9 July 2001
August 2001	8 August 2001
September 2001	10 September 2001
October 2001	8 October 2001
November 2001	8 November 2001

INTRODUCTION

1 This publication contains latest figures for a comprehensive range of economic indicators. Statistics shown in this publication are the latest available at the date of preparation and may be subject to revision in subsequent issues. Reference should therefore always be made to the latest issue or to the statistical publication on the specific subject.

SEASONAL ADJUSTMENT AND TREND ESTIMATION

2 Seasonal adjustment is a means of removing the estimated effects of normal seasonal variation from the series so that the effects of other influences on the series can be more clearly recognised. Seasonal adjustment does not aim to remove the irregular or non-seasonal influences which may be present in any particular month. This means that month-to-month movements of the seasonally adjusted estimates may not be reliable indicators of trend behaviour.

3 The smoothing of seasonally adjusted series reduces the impact of the irregular components of the seasonally adjusted series and creates trend estimates. These trend estimates are derived by applying a 13-term Henderson-weighted moving average to all months except the last six. The last six monthly trend estimates are obtained by applying surrogates of the Henderson average to the seasonally adjusted series.

4 While this smoothing technique enables estimates to be produced for the latest month, it does result in revisions to the most recent months as additional observations become available. Generally, subsequent revisions become smaller and after 3 months have a negligible impact on the series.

5 ABS statistical series are being impacted by varying degrees as a result of The New Tax System (TNTS), introduced in Australia from 1 July 2000. TNTS includes the removal of Wholesale Sales Tax and the introduction of a Goods and Service Tax (GST), and as a result, a number of ABS data series will reflect significant and subsequent impacts. Further information can be found in *ABS Statistics and The New Tax System* (Cat. no. 1358.0).

SYMBOLS AND OTHER USAGES

n.a.	not available
n.p.	not available for separate publication (but included in totals where applicable)
n.y.a.	not yet available
. .	not applicable
—	nil or rounded to zero
p	preliminary—figure or series subject to revision
r	figure or series revised since previous issue

Stevan R. Matheson
Regional Director, Tasmania

MAIN FEATURES

THE LABOUR FORCE

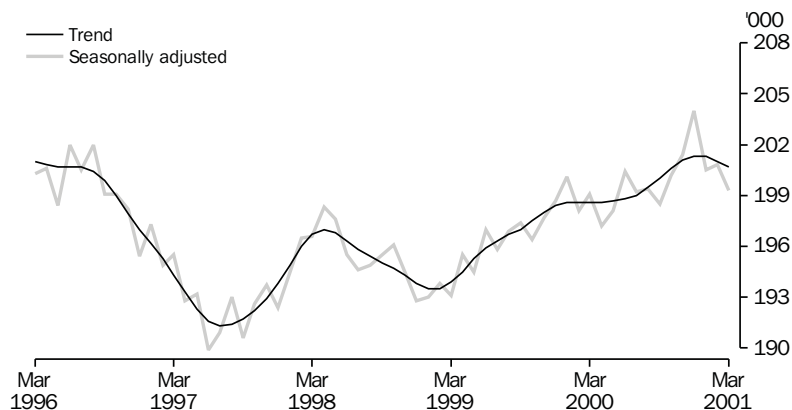
Trend estimates There were an estimated 220,200 persons (based on *trend* estimates) in the labour force in March 2001 and an estimated 372,100 civilian Tasmanians aged 15 years or more, yielding a labour force participation rate of 59.2%. This compares with 59.0% in March 2000. The Australian labour force participation rate for March 2001 was 63.6%. This compares with 63.5% in March 2000 (see table 39 and *Labour Force, Australia, Preliminary* (Cat. no. 6202.0)).

For Tasmanian males, the *trend* estimate of the participation rate was 68.4%, compared with 67.2% in March 2000. For Tasmanian females, the *trend* estimate of the participation rate was 50.4%, compared with 51.2% in March 2000 (see table 3).

EMPLOYMENT

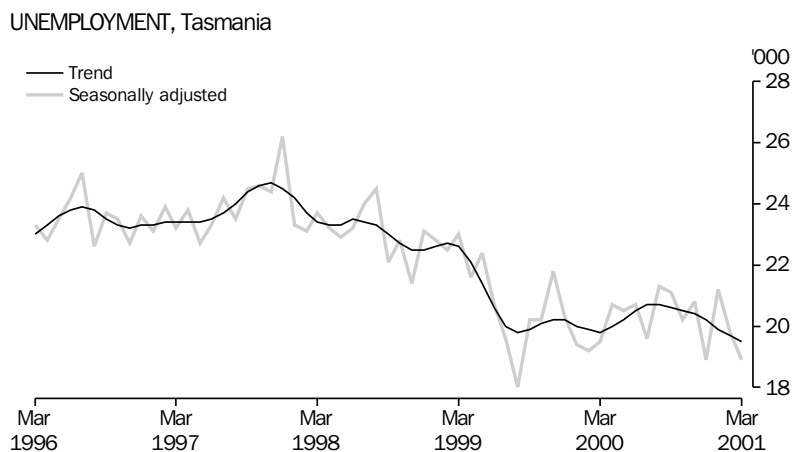
State comparisons There was an increase of 1.1% in Tasmania's employment over the 12 months to March 2001. Victoria recorded an increase of 3.4%; Western Australia, 1.6%; Queensland, 0.9%; and New South Wales, 0.2%; while South Australia recorded a decrease of 0.8%. The increase in Australia's employment over the same period was 1.3% (see table 39 and *Labour Force, Australia, Preliminary* (Cat. no. 6202.0)).

EMPLOYMENT, Tasmania



UNEMPLOYMENT

Trend estimates The *trend* estimate of the number of unemployed persons in Tasmania for March 2001 was 19,500. This compares with 19,800 in March 2000. The *trend* estimate of the unemployment rate of 8.9% in March 2001 compares with 9.1% in March 2000. The Australian *trend* estimate of the unemployment rate of 6.8% in March 2001 was the same as in March 2000 (see table 3 and 39, and *Labour Force, Australia, Preliminary* (Cat. no. 6202.0)).



LIVESTOCK SLAUGHTERING

Trend estimates In February 2001, the *trend* estimate for Tasmania for the number of cattle and calves slaughtered increased by 3.3% over the previous month. Over the same period, the estimate for the number of sheep and lambs slaughtered fell by 5.2% while the estimate for the number of pigs slaughtered increased by 0.4%.

The trend estimate for the slaughtering of cattle and calves was 21,500 in February 2001. This was down by 8.8% on the number for February 2000, and down 2.1% on the number for February 1999.

The *trend* estimate for the number of sheep and lambs slaughtered was 57,300. This was down by 32.6% on the number for February 2000, and down 24.4% on the number for February 1999.

The *trend* estimate of 4,650 pigs slaughtered in February 2001 was 18.0% less than for February 2000 and 29.0% less than the trend estimate for February 1999 (see table 21).

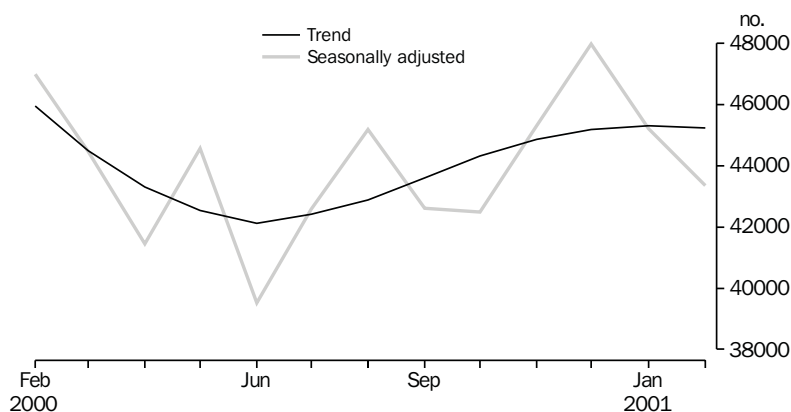
BUILDING APPROVALS

Original terms At current prices, total private new capital expenditure, in Tasmania, for the December quarter 2000 was \$141 million. This was 8.5% above the September quarter 2000 figure of \$130 million and 48.4% above the December quarter 1999 figure of \$95 million (see table 29).

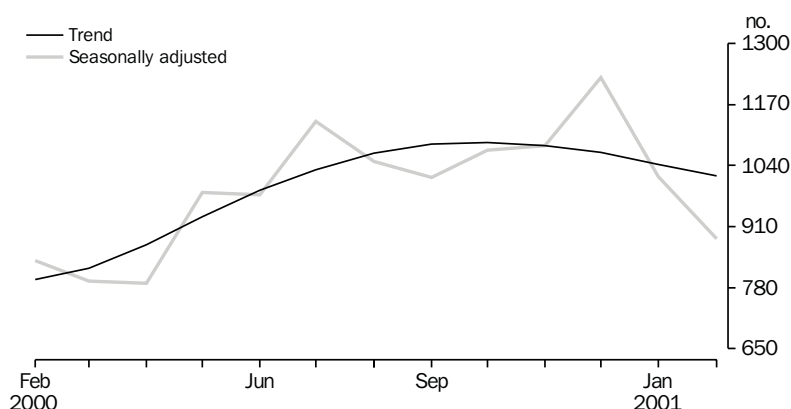
HOUSING FINANCE

The latest trend series for the number of housing finance commitments in Tasmania shows a decrease of 2.4% between January 2001 and February 2001. However, the trend series shows an overall increase of 27.6% between February 2000 and February 2001. The national trend series shows a decrease of 1.6% for the year February 2000 to February 2001, with a decrease of 0.1% between January 2001 and February 2001.

HOUSING FINANCE, AUSTRALIA, Number of dwellings



HOUSING FINANCE, TASMANIA, Number of dwellings



The latest trend series for the total value of commitments for Tasmania has decreased by 4.2% between January 2001 and February 2001, continuing the downward trend since September 2000. However, the trend series for the year between February 2000 to February 2001 shows an increase of 3.0%. The national trend series shows the value of commitments having increased by 1.2% between January 2001 and February 2001. However, a decline of 5.2% is shown for the 12 months from February 2000 to February 2001 (see table 28 and *Housing Finance for Owner Occupation, Australia* (Cat. no. 5609.0)).

TOURIST ACCOMMODATION

Original terms Guest rooms available in licensed hotels, motels and guest houses, and serviced apartments with 15 or more rooms or units decreased by 1.5% in the December quarter 2000 compared with the December quarter 1999.

Room nights occupied decreased overall by 5.2% in the December quarter 2000 compared with the December quarter 1999. Room occupancy rates decreased from 56.0% to 53.6% overall, with rates decreasing for licensed hotels with facilities (from 56.2% to 53.0%), motels and guest houses (from 52.2% to 52.0%) and serviced apartments (from 62.9% to 58.8%).

Takings from accommodation increased by 5.8% overall in the December quarter 2000 compared with the December quarter 1999, with takings increasing for licensed hotels with facilities (by 9.9%), motels and guest houses (by 0.5%) and serviced apartments (by 3.2%). Average takings per room night occupied increased for licensed hotels with facilities (from \$81 to \$95), increased for motels and guest houses (from \$81 to \$85) and serviced apartments (from \$105 to \$114) (see table 31).

NEW MOTOR VEHICLE REGISTRATIONS

Original terms There were 996 new motor vehicles (excluding motorcycles) registered in Tasmania during February 2001. This was 4.3% below the 1,041 registered in January 2001 and 0.4% above the February 2000 figure of 992. Of the new motor vehicles (excluding motorcycles) registered in February 2001, there were 6 vehicles registered by vehicle rental businesses, compared with 9 in January 2001 and one in February 2000 (see table 34).

RETAIL

Trend estimates In *trend* terms, the estimate of retail turnover in Australia for February 2001 was \$13,012.4 million, 7.0% above the figure recorded in February 2000. In *trend* terms, the estimate of retail turnover in Tasmania for February 2001 was \$286.6 million, 6.0% above the figure recorded in February 2000 (see table 35 and *Retail Trade, Australia* (Cat. no. 8501.0)).

OVERSEAS TRADE

The value of Tasmania's exports for the month of February 2001 was \$172 million, a decrease of 10% over the month of January. Australia's exports for February 2001 totalled \$9,212 million, an increase of 11% over the January figure.

Tasmania's major export destinations for the month of February were Japan (\$41.9 million), United States of America (\$19.2 million) and Hong Kong (\$16.2 million). Major commodity groups exported for the month were non-ferrous metals (\$65.7 million), metallic ores and metal scrap (\$17.0 million), and fish, crustaceans and molluscs (\$12.1 million).

LIST OF TABLES

1	Population	9
2	Births, deaths and marriages	9
3	Labour force status	10
4	Labour force status by region, males	11
5	Labour force status by region, females	12
6	Labour force status by region, persons	13
7	Teenage labour market	14
8	All employed persons by occupation	15
9	Wage and salary earners, sector and industry	16
10	Average hours worked	16
11	Job vacancies	17
12	Industrial disputes	17
13	Average weekly earnings of employees	18
14	Indexes of total hourly rates of pay	19
15	Summary of annual movements in wages and prices	20
16	House price index numbers	20
17	Consumer price index, Hobart and eight capital cities combined	21
18	Price index of materials used in building other than house building, Hobart	22
19	Production of selected commodities	24
20	Livestock slaughtering	25
21	Livestock slaughtering: seasonally adjusted and trend	25
22	Meat production	26
23	Principal mineral concentrates produced	26
24	Sawmills and plywood mills, logs delivered and timber produced	27
25	Chipping and grinding of wood	28
26	Logs delivered for milling or chipping	28
27	Building approvals	29
28	Secured housing commitments	30
29	Private new capital expenditure by type of asset	30
30	Banking statistics	31
31	Accommodation establishments	32
32	National Parks, person entries	33
33	Tracks in National Parks, walker registrations	33
34	Registrations of new motor vehicles	34
35	Turnover of retail establishments at current prices	35
36	Value of overseas trade — Tasmania and Australia	36
37	Merchandise exports by selected countries and country groups	36
38	Merchandise exports by selected commodity groups	37
39	Major Statistical Indicators — Australia and State comparisons	38
40	Major Statistical Indicators — Tasmanian Statistical Divisions	40

1

POPULATION

	<i>Estimated resident population</i>	<i>Natural increase(a)</i>	<i>Net estimated migration gain</i>	<i>Total population growth</i>	<i>Annual growth rate(b)</i>
	'000	'000	'000	'000	%
1997-98	471.7	2.1	-3.9	-1.8	-0.38
1998-99	470.8	2.7	-3.6	-0.9	-0.19
1999-2000	470.4	2.2	-2.6	-0.4	-0.09
1998					
September qtr	471.6	0.6	-0.7	-0.1	-0.30
December qtr	471.6	0.7	-0.7	-0.1	-0.23
1999					
March qtr	471.1	0.7	-1.2	-0.5	-0.26
June qtr	470.8	0.7	-1.0	-0.3	-0.19
September qtr p	470.8	0.5	-0.5	0	-0.17
December qtr p	470.7	0.5	-0.5	-0.1	-0.17
2000					
March qtr p	470.6	0.6	-0.8	-0.1	-0.09
June qtr p	470.4	0.5	-0.8	-0.3	-0.09
September qtr p	n.y.a.	0.5	n.y.a.	n.y.a.	n.y.a.

(a) Excess of live births registered over deaths registered (based on usual State of residence).

(b) Percentage growth from same quarter in previous year.

Source: Australian Demographic Statistics (Cat. no. 3101.0).

2

BIRTHS, DEATHS AND MARRIAGES(a)

	<i>Births</i>		<i>Deaths</i>		<i>Infant mortality(b)</i>		<i>Marriages</i>	
	<i>no.</i>	<i>rate(c)</i>	<i>no.</i>	<i>rate(d)</i>	<i>no.</i>	<i>rate(e)</i>	<i>no.</i>	<i>rate(f)</i>
1997-98	5 870	1.76	3 766	6.6	38	6.5	2 782	5.9
1998-99	6 384	1.95	3 726	6.2	41	6.4	2 483	5.3
1999-2000	5 844	1.82	3 683	6.2	40	6.8	2 648	5.6
1998								
September qtr	1 636	..	1 031	..	9	5.5	331	..
December qtr	1 567	..	907	..	8	5.1	658	..
1999								
March qtr	1 545	..	865	..	9	5.8	858	..
June qtr	1 636	..	923	..	15	9.2	636	..
September qtr p	1 555	..	1 035	..	16	10.3	327	..
December qtr p	1 367	..	905	..	9	6.6	678	..
2000								
March qtr p	1 512	..	864	..	7	4.6	910	..
June qtr p	1 410	..	879	..	8	5.7	733	..
September qtr p	1 405	..	954	..	6	4.3	364	..

(a) Usual residents of Tasmania.

(b) Deaths of children under one year of age.

(c) Total fertility rate. The sum of age specific fertility rates (live births at each age of a mother per female population of that age). It represents the number of children a woman would bear during her lifetime if she experienced age-specific fertility rates at each age of her reproductive life.

(d) Standardised death rate. The overall death rate, per 1,000 persons, that would have prevailed in a standard population if it had experienced at each age the death rates of the population being studied. The standard population used in these calculations is all persons in the 1991 Australian population.

(e) Rate per 1,000 live births.

(f) Crude marriage rate is the number of marriages registered during the financial year, per 1,000 estimated resident population at 31 December of that year.

Source: Australian Demographic Statistics (Cat. no. 3101.0).

3

LABOUR FORCE STATUS(a): SEASONALLY ADJUSTED AND TREND

	Seasonally adjusted series(b)				Trend series(b)			
	Employed	Unemployed	Unemployment rate	Participation rate	Employed	Unemployed	Unemployment rate	Participation rate
	'000	'000	%	%	'000	'000	%	%
MALES								
2000								
March	109.6	11.2	9.2	67.0	109.5	11.5	9.5	67.2
April	108.9	11.8	9.8	67.0	109.5	11.7	9.7	67.2
May	109.4	12.0	9.9	67.3	109.6	12.0	9.9	67.4
June	110.1	13.4	10.9	68.4	109.8	12.4	10.1	67.7
July	110.4	11.7	9.5	67.7	110.1	12.6	10.3	68.0
August	110.5	13.0	10.6	68.4	110.4	12.7	10.3	68.2
September	110.6	12.9	10.4	68.4	110.9	12.7	10.3	68.4
October	110.5	12.7	10.3	68.2	111.3	12.7	10.2	68.6
November	111.9	12.6	10.2	68.9	111.6	12.6	10.2	68.7
December	112.8	12.0	9.6	69.0	111.7	12.6	10.1	68.8
2001								
January	112.3	12.7	10.2	69.1	111.8	12.5	10.1	68.7
February	110.9	13.3	10.7	68.7	111.6	12.4	10.0	68.6
March	110.8	11.6	9.5	67.6	111.5	12.3	10.0	68.4
FEMALES								
2000								
March	89.5	8.3	8.5	51.5	89.1	8.3	8.5	51.2
April	88.2	8.9	9.1	51.0	89.1	8.3	8.5	51.2
May	88.8	8.5	8.7	51.1	89.0	8.2	8.5	51.1
June	90.3	7.3	7.5	51.3	89.0	8.1	8.4	51.0
July	88.8	7.9	8.2	50.8	89.0	8.0	8.3	50.9
August	88.9	8.3	8.5	51.0	89.0	8.0	8.2	50.9
September	87.9	8.2	8.6	50.4	89.2	7.9	8.2	50.9
October	89.7	7.6	7.8	51.0	89.3	7.9	8.1	51.0
November	89.6	8.1	8.3	51.2	89.5	7.8	8.0	51.0
December	91.2	6.9	7.0	51.4	89.6	7.6	7.8	50.9
2001								
January	88.2	8.5	8.8	50.6	89.5	7.4	7.7	50.8
February	89.9	6.5	6.8	50.4	89.4	7.3	7.5	50.6
March	88.5	7.3	7.6	50.1	89.2	7.2	7.4	50.4
TOTAL								
2000								
March	199.1	19.5	8.9	59.0	198.6	19.8	9.1	59.0
April	197.2	20.7	9.5	58.8	198.6	20.0	9.1	59.0
May	198.1	20.5	9.4	59.0	198.7	20.2	9.2	59.1
June	200.4	20.7	9.4	59.6	198.8	20.5	9.4	59.1
July	199.2	19.6	9.0	59.0	199.0	20.7	9.4	59.2
August	199.4	21.3	9.7	59.5	199.5	20.7	9.4	59.3
September	198.5	21.1	9.6	59.2	200.0	20.6	9.4	59.4
October	200.2	20.2	9.2	59.3	200.6	20.5	9.3	59.5
November	201.4	20.8	9.3	59.8	201.1	20.4	9.2	59.6
December	204.0	18.9	8.5	59.9	201.3	20.2	9.1	59.6
2001								
January	200.5	21.2	9.6	59.6	201.3	19.9	9.0	59.5
February	200.8	19.8	9.0	59.3	201.0	19.7	8.9	59.3
March	199.3	18.9	8.6	58.6	200.7	19.5	8.9	59.2

(a) For explanation of terms and concepts, refer to *Labour Force, Australia, Preliminary* (Cat. no. 6202.0).

(b) Seasonal factors are reviewed annually to take account of each additional year's data. The results of the review are used to compile revised seasonally adjusted and trend estimates each February. Trend estimates for the most recent months are also revised each month; see Notes on page 2.

Source: *Labour Force, Australia, Preliminary* (Cat. no. 6202.0).

4

LABOUR FORCE STATUS BY REGION — MALES(a)(b)

	<i>Total employed</i>	<i>Total unemployed</i>	<i>Unemployment rate</i>	<i>Participation rate</i>
	'000	'000	%	%
HOBART AND SOUTHERN STATISTICAL DIVISIONS				
1998				
March	54.4	5.9	9.8	70.1
2000				
March	51.7	5.0	8.7	65.4
2001				
January	52.3	6.8	11.4	67.9
February	51.3	7.2	12.3	66.8
March	51.5	6.2	10.8	66.8
NORTHERN STATISTICAL DIVISION				
1998				
March	30.2	5.1	14.4	69.4
2000				
March	32.6	2.5	7.1	67.6
2001				
January	35.9	3.2	8.3	72.6
February	36.8	3.4	8.4	72.9
March	35.2	3.1	8.1	70.8
MERSEY-LYELL STATISTICAL DIVISION				
1998				
March	26.7	4.5	14.5	71.6
2000				
March	25.4	3.8	13.1	70.0
2001				
January	23.4	4.0	14.5	68.4
February	22.9	3.3	12.7	68.5
March	24.1	2.4	9.1	65.5
TASMANIA				
1998				
March	111.3	15.5	12.2	70.3
2000				
March	109.7	11.3	9.3	67.1
2001				
January	111.5	14.0	11.1	69.4
February	111.0	13.9	11.1	69.0
March	110.8	11.7	9.6	67.7

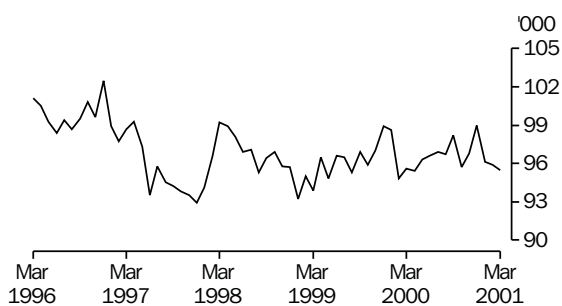
(a) For explanation of terms and concepts, refer to *Labour Force, Australia* (Cat. no. 6203.0).

(b) Data in this table are original series, i.e. they are not part of a seasonally adjusted or a trend series. Accordingly, care should be exercised when using these data.

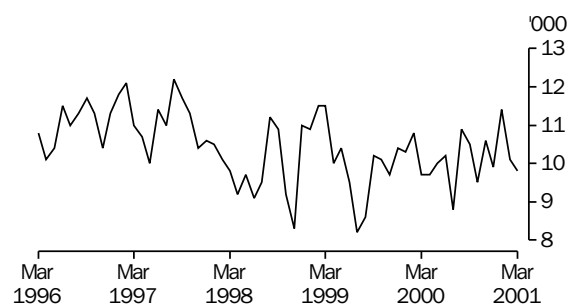
Source: *Labour Force, Selected Summary Tables, Australia* (Cat. no. 6291.0.40.001).

Hobart and Southern Statistical Divisions — Persons (see table 6)

EMPLOYMENT



UNEMPLOYMENT



5

LABOUR FORCE STATUS BY REGION — FEMALES(a)(b)

	Total employed	Total unemployed	Unemployment rate	Participation rate
	'000	'000	%	%
HOBART AND SOUTHERN STATISTICAL DIVISIONS				
1998				
March	44.8	3.9	8.0	53.9
2000				
March	43.9	4.7	9.7	52.2
2001				
January	43.8	4.6	9.5	51.8
February	44.6	2.9	6.1	51.0
March	44.0	3.5	7.4	50.9
NORTHERN STATISTICAL DIVISION				
1998				
March	23.1	2.8	10.7	47.8
2000				
March	25.3	2.7	9.5	50.2
2001				
January	26.0	2.0	7.0	50.6
February	26.8	2.3	8.0	51.9
March	26.9	2.2	7.5	52.9
MERSEY-LYELL STATISTICAL DIVISION				
1998				
March	17.9	2.0	10.1	44.5
2000				
March	20.7	1.4	6.1	53.5
2001				
January	16.9	2.3	11.8	45.3
February	17.7	1.7	8.7	46.6
March	18.1	1.9	9.6	46.8
TASMANIA				
1998				
March	85.9	8.7	9.2	49.9
2000				
March	89.9	8.7	8.9	51.9
2001				
January	86.8	8.8	9.2	50.0
February	89.2	6.9	7.2	50.3
March	89.0	7.7	7.9	50.5

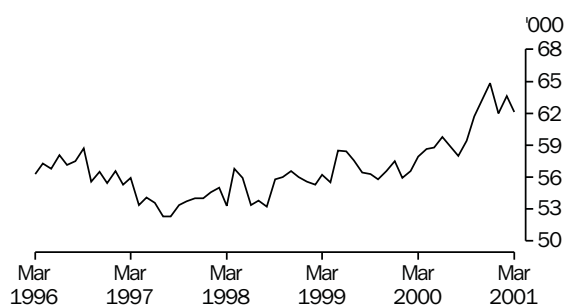
(a) For explanation of terms and concepts, refer to *Labour Force, Australia* (Cat. no. 6203.0).

(b) Data in this table are original series, i.e. they are not part of a seasonally adjusted or a trend series. Accordingly, care should be exercised when using these data.

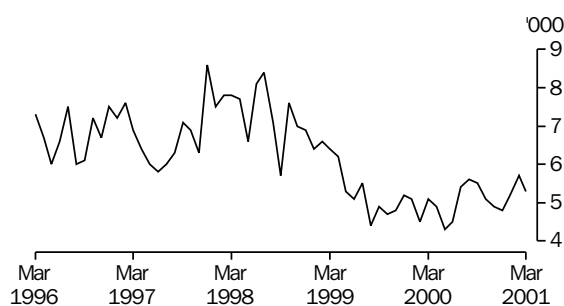
Source: *Labour Force, Selected Summary Tables, Australia* (Cat. no. 6291.0.40.001).

Northern Statistical Division — Persons (see table 6)

EMPLOYMENT



UNEMPLOYMENT



6

LABOUR FORCE STATUS BY REGION — PERSONS(a)(b)

	Total employed	Total unemployed	Unemployment rate	Participation rate
	'000	'000	%	%
HOBART AND SOUTHERN STATISTICAL DIVISIONS				
1998				
March	99.2	9.8	9.0	61.8
2000				
March	95.6	9.7	9.2	58.5
2001				
January	96.1	11.4	10.6	59.5
February	95.9	10.1	9.5	58.6
March	95.5	9.8	9.3	58.5
NORTHERN STATISTICAL DIVISION				
1998				
March	53.3	7.8	12.8	58.3
2000				
March	57.9	5.1	8.2	58.6
2001				
January	62.0	5.2	7.7	61.5
February	63.6	5.7	8.2	62.3
March	62.1	5.3	7.9	61.8
MERSEY-LYELL STATISTICAL DIVISION				
1998				
March	44.6	6.5	12.8	57.9
2000				
March	46.1	5.2	10.1	61.8
2001				
January	40.2	6.2	13.4	56.5
February	40.6	5.0	11.0	57.1
March	42.2	4.3	9.3	55.9
TASMANIA				
1998				
March	197.1	24.1	10.9	59.9
2000				
March	199.6	20.0	9.1	59.3
2001				
January	198.3	22.8	10.3	59.4
February	200.1	20.8	9.4	59.4
March	199.8	19.4	8.8	58.9

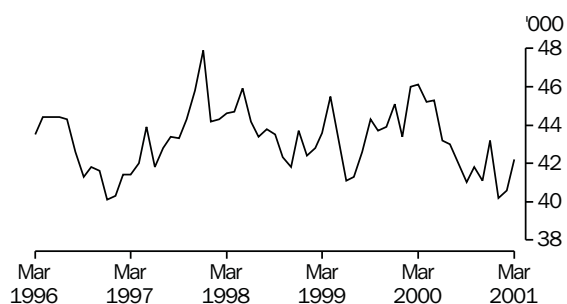
(a) For explanation of terms and concepts, refer to *Labour Force, Australia* (Cat. no. 6203.0).

(b) Data in this table are original series, i.e. they are not part of a seasonally adjusted or a trend series. Accordingly, care should be exercised when using these data.

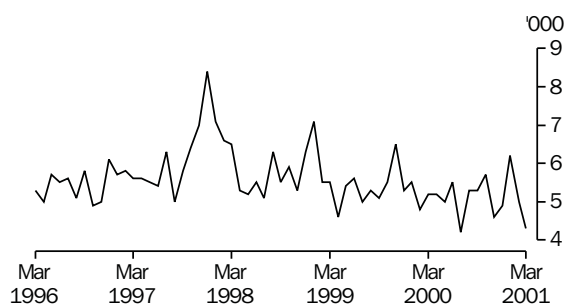
Source: *Labour Force, Selected Summary Tables, Australia* (Cat. no. 6291.0.40.001).

Mersey-Lyell Statistical Division — Persons (see table 6)

EMPLOYMENT



UNEMPLOYMENT



7

TEENAGE LABOUR MARKET(a)

	<i>Employed</i>		<i>Unemployed</i>		<i>Labour force</i>	<i>Not in labour force</i>	<i>Civilian population aged 15–19</i>	<i>Unemployment rate</i>	<i>Unemployment population ratio</i>	<i>Participation rate</i>
	<i>Full time</i>	<i>Total</i>	<i>Looking for full time work</i>	<i>Total</i>						
	'000	'000	'000	'000						
ATTENDING NEITHER A SCHOOL NOR A TERTIARY INSTITUTION FULL TIME										
1998										
March	5.7	8.1	3.6	3.6	11.6	1.3	12.9	30.6	27.6	90.1
2000										
March	6.3	8.2	1.6	1.6	9.8	0.7	10.5	16.7	15.7	93.7
2001										
January	6.5	10.0	1.5	1.6	11.6	1.6	13.1	13.5	11.9	87.9
February	6.4	8.9	1.8	2.0	10.9	1.0	11.9	18.5	16.9	91.7
March	6.0	9.0	1.8	1.9	10.9	0.9	11.8	17.7	16.4	92.7
ATTENDING SCHOOL OR A TERTIARY INSTITUTION FULL TIME										
1998										
March	0.1	5.3	0.2	2.0	7.3	14.1	21.4	26.8	9.1	34.1
2000										
March	0.2	6.3	0.8	3.3	9.6	14.7	24.3	33.9	13.4	39.5
2001										
January	0.7	7.8	1.3	3.3	11.1	10.3	21.5	29.7	15.4	51.9
February	0.7	7.4	1.4	2.5	9.9	12.8	22.7	25.5	11.1	43.5
March	0.1	6.5	0.1	1.9	8.4	14.4	22.8	22.4	8.2	36.8
TOTAL										
1998										
March	5.8	13.4	3.8	5.5	18.9	15.4	34.3	29.2	16.1	55.2
2000										
March	6.4	14.5	2.4	4.9	19.4	15.4	34.8	25.3	14.1	55.8
2001										
January	7.1	17.8	2.8	4.9	22.7	11.9	34.6	21.5	14.1	65.6
February	7.1	16.2	3.2	4.5	20.8	13.8	34.6	21.8	13.1	60.1
March	6.1	15.5	1.9	3.8	19.3	15.3	34.6	19.8	11.0	55.8

(a) Persons aged 15–19 years. For explanation of terms and concepts, refer to *Labour Force, Australia* (Cat. no. 6203.0). Care should be exercised when using these series as some estimates are subject to high sampling variability.

Source: ABS data available on request, *Labour Force, Estimates; Labour Force, Teenage Employment and Unemployment, Australia, Preliminary, Data Report* (Cat. no. 6202.0.40.001).

8

ALL EMPLOYED PERSONS BY OCCUPATION(a)

	February 2000			February 2001		Proportion of total employed	
	Persons	Males	Females	Persons	February 2000	February 2001	
	'000	'000	'000	'000	%	%	
Managers and administrators							
Generalist managers	2.0	2.1	0.2	2.3	1.0	1.2	
Specialist managers	4.8	3.0	1.0	4.1	2.5	2.0	
Farmers and farm managers	8.4	4.8	1.7	6.5	4.2	3.3	
Total	15.2	10.0	2.9	12.9	7.7	6.4	
Professionals							
Science, building and engineering professionals	3.5	4.3	0.2	4.4	1.8	2.2	
Business and information professionals	5.3	3.4	2.2	5.6	2.7	2.8	
Health professionals	8.6	1.8	6.0	7.8	4.4	3.9	
Education professionals	8.8	2.6	4.4	7.0	4.4	3.5	
Social, arts and miscellaneous professionals	6.1	2.8	2.8	5.6	3.1	2.8	
Total	32.3	14.9	15.6	30.5	16.3	15.2	
Associate professionals							
Science, engineering and related associate professionals	2.7	2.1	0.6	2.8	1.4	1.4	
Business and administration associate professionals	4.0	2.7	1.7	4.4	2.0	2.2	
Managing supervisors (sales and service)	8.2	6.9	3.7	10.6	4.2	5.3	
Health and welfare associate professionals	1.1	0.6	0.6	1.2	0.5	0.6	
Other associate professionals	4.3	2.3	1.8	4.1	2.2	2.0	
Total	19.2	14.0	7.8	21.8	9.7	10.9	
Tradespersons and related workers							
Mechanical and fabrication engineering tradespersons	4.5	5.4	0.1	5.5	2.3	2.8	
Automotive tradespersons	3.4	2.2	—	2.2	1.7	1.1	
Electrical and electronics tradespersons	4.8	4.1	0.1	4.2	2.4	2.1	
Construction tradespersons	4.3	4.8	—	4.8	2.2	2.4	
Other tradespersons and related workers	9.8	6.7	2.6	9.4	4.9	4.7	
Total	26.7	23.3	2.8	26.1	13.5	13.0	
Advanced clerical and service workers							
Secretaries and personal assistants	2.5	0.1	2.3	2.4	1.3	1.2	
Other advanced clerical and service workers	4.1	0.6	2.1	2.7	2.1	1.4	
Total	6.6	0.7	4.4	5.1	3.3	2.6	
Intermediate clerical, sales and service workers							
Intermediate clerical workers	18.4	5.8	18.4	24.1	9.3	12.1	
Intermediate sales and related workers	3.0	2.7	1.2	3.9	1.5	1.9	
Intermediate service workers	13.0	3.6	9.7	13.3	6.6	6.6	
Total	34.4	12.1	29.2	41.3	17.4	20.6	
Intermediate production and transport workers							
Intermediate plant operators	6.5	6.0	0.2	6.2	3.3	3.1	
Intermediate machine operators	1.7	2.1	0.5	2.6	0.9	1.3	
Road and rail transport drivers	6.9	6.3	0.5	6.8	3.5	3.4	
Other intermediate production and transport workers	3.9	2.4	1.1	3.5	2.0	1.7	
Total	19.0	16.8	2.3	19.1	9.6	9.5	
Elementary clerical, sales and service workers							
Elementary clerks	2.6	0.5	0.9	1.4	1.3	0.7	
Elementary sales workers	16.2	6.0	13.8	19.9	8.2	9.9	
Elementary service workers	2.3	1.2	1.2	2.4	1.2	1.2	
Total	21.1	7.8	15.9	23.6	10.7	11.8	
Labourers and related workers							
Cleaners	5.9	2.0	4.0	6.0	3.0	3.0	
Factory labourers	5.5	3.6	0.9	4.5	2.8	2.3	
Other labourers and related workers	11.6	5.9	3.2	9.1	5.9	4.6	
Total	22.9	11.4	8.2	19.6	11.6	9.8	
Total employed	197.5	111.0	89.2	200.1	100.0	100.0	

(a) For explanation of terms and concepts, refer to *Labour Force, Australia* (Cat. no. 6203.0).Source: ABS data available on request, *Labour Force, Estimates*.

9

WAGE AND SALARY EARNERS, SECTOR AND INDUSTRY(a)

	Employees, August 2000			Percentage distribution	
	Private	Public	Total	August 1999	August 2000
	'000	'000	'000	%	%
Agriculture, forestry & fishing	n.a.	0.6	0.6	0.4	0.4
Mining	1.6	—	1.6	0.7	1.0
Manufacturing	n.p.	n.p.	18.7	14.6	12.0
Electricity, gas & water supply	—	1.8	1.8	1.2	1.2
Construction	5.3	0.2	5.5	3.0	3.5
Wholesale trade	7.1	—	7.1	8.1	4.5
Retail trade	27.7	—	27.7	15.1	17.7
Accommodation, cafes & restaurants	10.3	—	10.3	6.1	6.6
Transport & storage	4.7	0.8	5.5	4.0	3.5
Communication services	n.p.	n.p.	2.6	1.3	1.7
Finance and insurance	4.8	0.2	5.0	2.2	3.2
Property & business services	9.5	0.5	10.0	6.6	6.4
Government administration and defence	—	8.4	8.4	5.5	5.4
Education	3.4	14.7	18.1	10.4	11.6
Health and community services	14.2	8.4	22.5	14.1	14.4
Cultural and recreational services	2.8	1.0	3.8	2.4	2.4
Personal and other services	4.3	2.7	6.9	4.2	4.4
Total all industries	115.0	41.2	156.2	100.0	100.0

(a) For explanation of terms and concepts, refer to *Wage and Salary Earners, Australia* (Cat. no. 6248.0).

Source: *Wage and Salary Earners, Australia* (Cat. no. 6248.0).

10

AVERAGE HOURS WORKED

	Average weekly total hours worked, all employed persons(a)		
	Males	Females	Persons
1999			
November	39.8	27.2	34.1
2000			
February	37.1	24.7	31.6
May	38.9	28.1	34.1
August	38.1	26.7	33.0
November	39.5	27.6	34.2
2001			
February	38.5	26.2	33.0

(a) For explanation of terms and concepts, refer to *Labour Force, Australia* (Cat. no. 6203.0).

Source: ABS data available on request.

11

JOB VACANCIES(a)(b)

	no. '000	rate(c) %
1999		
November	2.2	1.3
2000		
February	1.7	1.0
May	1.3	0.8
August	2.5	1.5
November	1.9	1.1
2001		
February	2.1	1.2

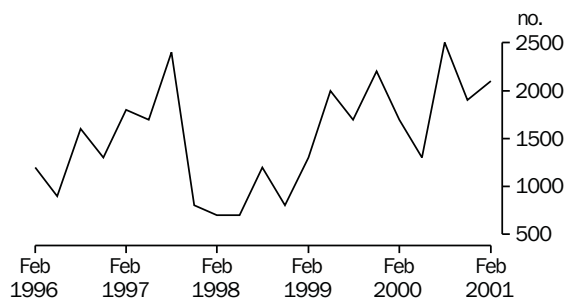
(a) For explanation of terms and concepts, refer to *Job Vacancies, Australia* (Cat. no. 6354.0).

(b) Care should be exercised in using these series as some estimates are subject to high sampling variability.

(c) Job vacancies expressed as a percentage of the number of employees plus job vacancies.

Source: *Job Vacancies, Australia* (Cat.no. 6354.0).

JOB VACANCIES



12

INDUSTRIAL DISPUTES(a)

	Working days lost '000	Twelve months ended	Working days lost per thousand employees no.
2000			
January	0.1	January	3
February	—	February	3
March	0.2	March	4
April	0.2	April	5
May	0.2	May	6
June	0.2	June	6
July	—	July	6
August	—	August	6
September	—	September	6
October	—	October	6
November	—	November	6
December	0.2	December	7
2001			
January	—	January	6
Twelve months ended			
January 2001	1.1		

(a) For explanation of terms and concepts, refer to *Industrial Disputes, Australia* (Cat. no. 6321.0).

Source: *Industrial Disputes, Australia* (Cat.no. 6321.0).

13

AVERAGE WEEKLY EARNINGS OF EMPLOYEES(a): ORIGINAL AND TREND

	<i>Full-time adult males</i>		<i>All males</i>	<i>Full-time adult females</i>		<i>All females</i>	<i>Full-time adult persons</i>		<i>All employees</i>
	<i>Weekly ordinary time earnings</i>	<i>Weekly total earnings</i>	<i>Weekly total earnings</i>	<i>Weekly ordinary time earnings</i>	<i>Weekly total earnings</i>	<i>Weekly total earnings</i>	<i>Weekly ordinary time earnings</i>	<i>Weekly total earnings</i>	<i>Weekly total earnings</i>
	\$	\$	\$	\$	\$	\$	\$	\$	\$
ORIGINAL									
1999									
August	749.70	778.50	660.50	619.10	629.90	420.70	703.60	726.10	537.60
November	761.00	801.60	682.50	641.30	658.90	433.90	719.00	751.50	554.90
2000									
February	767.70	799.30	686.20	639.60	656.70	444.20	723.90	750.60	566.70
May	788.10	828.20	695.80	643.40	659.10	428.00	737.20	768.80	558.10
August	784.20	819.60	677.60	645.40	660.90	422.90	736.50	765.10	547.40
November	784.60	824.70	683.20	663.40	685.10	431.00	741.30	774.80	549.50
TREND(b)									
1999									
August	748.10	784.60	670.40	625.10	638.10	427.30	705.80	734.10	547.10
November	757.70	792.00	675.30	632.60	647.50	432.90	713.80	741.30	551.90
2000									
February	771.60	806.80	684.60	639.10	655.40	435.00	725.10	753.70	558.40
May	782.10	818.10	688.30	645.00	662.00	432.30	734.60	764.10	558.50
August	787.20	825.60	688.80	651.60	669.20	428.70	740.50	771.60	554.50
November	787.90	829.40	685.90	658.60	677.30	427.00	743.20	776.80	549.00

(a) For explanation of terms and concepts, refer to *Average Weekly Earnings, Australia* (Cat. no. 6302.0).

(b) ABS trend estimates for the most recent months are revised, see Notes on page 2.

Source: *Average Weekly Earnings, Australia* (Cat. no. 6302.0).

	Index numbers				Percentage change		
	Mar qtr 2000	June qtr 2000	Sep qtr 2000	Dec qtr 2000	Mar qtr 2000 to June qtr 2000	June qtr 2000 to Sep qtr 2000	Sep qtr 2000 to Dec qtr 2000
SELECTED INDUSTRIES(C)							
Manufacturing	106.6	107.0	107.6	108.5	0.4	0.6	0.8
Retail trade	106.0	106.5	108.0	108.9	0.5	1.4	0.8
Transport & storage	108.0	n.a.	n.a.	n.a.	n.a.	n.a.	n.a.
Government administration and defence	104.8	105.4	106.8	107.5	0.6	1.3	0.7
Education	108.3	108.5	110.9	111.0	0.2	2.2	0.1
Health and community services	104.9	105.4	106.3	107.5	0.5	0.9	1.1
All industries(d)	106.5	106.9	108.1	108.9	0.4	1.1	0.7
SELECTED OCCUPATIONS							
Professionals	107.2	107.5	109.3	109.8	0.3	1.7	0.5
Associate professionals	106.4	106.9	107.9	109.7	0.5	0.9	1.7
Tradespersons & related workers	106.2	106.5	107.6	108.2	0.3	1.0	0.6
Intermediate clerical, sales & service workers	106.0	106.2	107.8	108.1	0.2	1.5	0.3
Intermediate production & transport workers	106.3	106.8	107.5	108.2	0.5	0.7	0.7
Elementary clerical, sales & service workers	108.6	109.3	109.9	110.9	0.6	0.5	0.9
Labourers & related workers	105.5	105.8	107.3	108.1	0.3	1.4	0.7
All occupations	106.5	106.9	108.1	108.9	0.4	1.1	0.7

(a) Base of each index: September quarter 1997 = 100.0.

(b) These indexes are a measure of quarterly changes in wage and salary costs for employee jobs. They are one of four sets of indexes that together comprise the Wage Cost Index. For explanation of terms and concepts, refer to *Wage Cost Index, Australia* (Cat. no. 6345.0).

(c) Industry is shown at the ANZSIC division level for selected divisions.

(d) Excludes Agriculture, forestry and fishing.

Source: ABS data available on request.

15

SUMMARY OF ANNUAL MOVEMENTS IN WAGES AND PRICES(a), Percentage Change From Previous Year

	CPI all groups–Hobart(b) %	Price index of materials used in house building all groups–Hobart(c) %	Price index of materials used in building other than house building all groups–Hobart(c) %	Average weekly total earnings, full-time adult employees(d) %
1997–98	–0.1	0.7	0.9	5.1
1998–99	1.0	1.0	0.9	2.4
1999–2000	1.9	1.3	0.4	2.5
1998				
December	1.2	1.4	1.2	3.3
1999				
March	0.5	0.7	0.7	3.4
June	0.4	–0.1	0.2	–0.3
September	0.4	–0.3	0.1	0.8
December	1.1	0.2	–0.2	2.3
2000				
March	2.6	2.0	0.6	0.6
June	3.3	3.4	1.2	6.5
September	6.5	(e)2.5	(e)–0.5	5.4
December	5.8	2.4	0.6	3.1

(a) Weekly award rates of pay collection has been discontinued from June 1997.

(b) See note 5 on page 2 of this issue on the impacts of The New Tax System (TNTS).

(c) Only quarterly data collected from June 1997. Earlier data has been re-compiled from monthly to quarterly.

(d) March, June, September and December data relates to February, May, August and November survey dates as published in Average Weekly Earnings, Australia (Cat. no. 6302.0).

(e) This quarter affected by the removal of the Wholesale Sales Tax from 1 July 2000.

Source: Consumer Price Index, Australia (Cat. no. 6401.0); Price Index of Materials Used in House Building, Six State Capital Cities (Cat. no. 6408.0), (quarterly from June 1997); Price Index of Materials Used in Other than House Building, Six State Capital Cities (Cat. no. 6407.0), (quarterly from June 1997); Average Weekly Earnings, Australia (Cat. no. 6302.0).

16

HOUSE PRICE INDEX NUMBERS(a)(b)

	Established house price index		Project home price index	
	Index	% change(c)	Index	% change(c)
1997–98	125.4	–2.4	123.3	—
1998–99	123.2	–1.8	123.3	—
1999–2000	129.0	4.7	126.2	2.4
1998				
December	121.7	–1.7	123.3	—
1999				
March	123.7	1.6	123.3	—
June	123.6	–0.1	123.3	—
September	125.3	1.4	124.0	0.6
December	127.8	2.0	125.4	1.1
2000				
March	128.6	0.6	127.5	1.7
June	134.2	4.4	127.9	0.3
September	134.3	0.1	(d)140.3	(d)9.7
December	133.7	–0.4	140.3	—

(a) Base of each Index: 1989–90 = 100.

(b) Used in calculating the mortgage interest charges component of the Consumer Price Index.

(c) Percentage change over previous period.

(d) See note 5 on page 2 of this issue on the impacts of The New Tax System (TNTS) introduced on 1 July 2000.

Source: House Price Indexes: Eight Capital Cities (Cat. no. 6416.0).

Hobart

	Food	Clothing and Footwear	Housing	Household furnishings, supplies and services	Transportation	Alcohol and tobacco
1997						
December	121.7	106.0	95.5	119.7	122.1	155.6
1998						
March	121.7	105.5	95.3	119.4	121.7	158.0
June	122.3	105.3	95.5	119.5	120.5	160.2
September	124.7	105.1	95.6	120.4	120.4	159.6
December	125.0	105.7	95.4	120.8	118.6	159.1
1999						
March	125.5	104.7	95.8	119.5	118.4	161.5
June	126.8	104.6	95.9	119.4	120.4	160.0
September	126.3	104.5	96.9	119.3	123.1	158.1
December	127.5	103.9	97.4	119.1	123.8	163.3
2000						
March	127.8	104.9	98.8	120.2	126.6	167.2
June	129.1	105.0	99.2	121.2	129.3	169.9
September	130.9	112.8	105.5	124.5	133.3	179.8
December	132.0	112.9	105.8	124.6	130.4	181.6

Weighted average of eight capital cities

Hobart

	Health	Education	Index, all groups	% change over previous period, all groups	Index	% change over previous period
1997						
December	175.7	182.3	121.2	0.5	120.0	0.3
1998						
March	178.6	190.0	121.5	0.2	120.3	0.3
June	183.0	190.0	122.0	0.4	121.0	0.6
September	190.4	190.0	122.8	0.7	121.3	0.2
December	187.8	190.0	122.7	-0.1	121.9	0.5
1999						
March	164.9	198.8	122.1	-0.5	121.8	-0.1
June	165.7	198.8	122.5	0.3	122.3	0.4
September	173.3	198.8	123.3	0.7	123.4	0.9
December	172.0	198.8	124.0	0.6	124.1	0.6
2000						
March	175.1	206.2	125.3	1.0	125.2	0.9
June	177.7	206.2	126.5	1.0	126.2	0.8
September	178.0	206.5	131.3	3.8	130.9	3.7
December	177.4	206.5	131.2	-0.1	131.3	0.3

(a) Base year: 1989-90 = 100.

(b) Further information on construction of CPI indexes is contained in the bulletin Australian Consumer Price Index Concepts, Sources and Methods (Cat. no. 6461.0).

(c) As a result of the introduction of the 14th Series Australian CPI there have been changes to some groups and restructuring of some others. See Appendix A4 of the September quarter issue of Consumer Price Index, Australia (Cat. no. 6401.0) for more information.

(d) See Note 5 on page 2 of this issue on the impacts of The New Tax System (TNTS) introduced on 1 July 2000.

Source: Consumer Price Index, Australia (Cat. no. 6401.0).

Index numbers for selected major building materials

	<i>Structural timber</i>	<i>Clay bricks</i>	<i>Ready mixed concrete</i>	<i>Precast concrete products</i>	<i>Steel decking, cladding etc.</i>	<i>Structural steel</i>
1997-98	108.9	129.0	118.0	131.5	117.8	127.2
1998-99	109.1	130.8	119.5	131.6	110.8	128.0
1999-2000	114.4	129.1	118.1	131.6	109.6	128.8
1998						
December	108.9	131.1	120.6	131.7	111.3	128.1
1999						
March	108.9	131.1	120.4	131.5	110.3	128.1
June	109.2	130.8	117.9	131.5	110.3	128.1
September	108.2	126.9	119.4	131.6	113.7	128.8
December	111.7	126.9	118.0	131.6	104.6	128.8
2000						
March	116.9	130.9	117.5	131.6	110.1	128.8
June	120.7	131.6	117.5	131.6	109.8	128.8
September(c)	120.9	131.6	117.6	131.6	106.4	129.1
December	120.9	131.8	117.6	131.6	108.2	129.4

Index numbers for selected major building materials

	<i>Reinforcing steel bar, fabric and mesh</i>	<i>Aluminium windows</i>	<i>Fabricated steel products</i>	<i>Builders hardware</i>	<i>Sand and aggregate</i>	<i>Paint and other coatings</i>	<i>Non-ferrous pipes and fittings</i>
1997-98	112.7	107.2	114.7	113.7	124.5	127.3	164.3
1998-99	113.4	107.3	116.0	113.4	127.9	133.3	161.2
1999-2000	110.5	108.5	114.0	116.0	144.0	133.7	168.2
1998							
December	113.3	106.7	116.1	113.9	127.9	133.9	160.2
1999							
March	113.4	106.9	116.1	114.8	127.9	134.2	161.4
June	113.4	107.0	115.6	111.3	127.9	132.5	160.2
September	113.4	107.0	116.1	110.8	135.4	131.7	162.4
December	110.2	107.0	113.6	114.8	139.4	133.5	166.0
2000							
March	109.1	109.9	113.1	120.2	150.4	135.2	167.2
June	109.1	110.1	113.1	118.1	150.9	134.2	177.0
September(c)	107.8	110.1	113.1	117.3	145.5	131.8	177.2
December	107.9	116.6	113.0	118.8	146.1	135.7	183.8

(a) Base year: 1989-90 = 100.

(b) Index numbers in this table have been recompiled to reflect the change to a quarterly collection basis from June 1997.

(c) This quarter affected by the removal of the Wholesale Sales Tax from 1 July 2000.

Source: *Price Index of Materials Used in Other than House Building, Six State Capital Cities (Cat. no. 6407.0)*.

	<i>All electrical materials</i>		<i>All mechanical services</i>		<i>All plumbing materials</i>	
	<i>Index</i>	<i>% change over previous period</i>	<i>Index</i>	<i>% change over previous period</i>	<i>Index</i>	<i>% change over previous period</i>
1997-98	117.2	-0.2	117	—	121.9	-0.7
1998-99	115.8	-1.2	119	1.7	124.5	2.1
1999-2000	117.6	1.6	120.3	1.1	127	2
1998						
December	116.8	0.6	119.1	1.1	124.1	-0.6
1999						
March	115.2	-1.4	119.4	0.3	124.4	0.2
June	115.2	—	119.5	0.1	124.5	0.1
September	115.9	0.6	119.3	-0.2	122.3	-1.8
December	117.5	1.4	119.8	0.4	126.5	3.4
2000						
March	118.3	0.7	120.3	0.4	128	1.2
June	118.7	0.3	121.9	1.3	131	2.3
September(c)	115.8	-2.4	117.3	-3.8	129.1	-1.5
December	117.6	1.6	118	0.6	131.8	2.1

	<i>All groups excluding electrical materials and mechanical services</i>		<i>All groups</i>	
	<i>Index</i>	<i>% change over previous period</i>	<i>Index</i>	<i>% change over previous period</i>
1997-98	118	1	117.4	0.9
1998-99	118.8	0.7	118.5	0.9
1999-2000	119.1	0.3	119	0.4
1998				
December	119	-0.1	118.6	0.2
1999				
March	118.8	-0.2	118.5	-0.1
June	118.4	-0.3	118.3	-0.2
September	118.8	0.3	118.5	0.2
December	118.4	-0.3	118.4	-0.1
2000				
March	119.3	0.8	119.2	0.7
June	119.7	0.3	119.7	0.4
September(c)	118.8	-0.8	117.9	-1.5
December	120.1	1.1	119.1	1

(a) Base year: 1989-90 = 100.

(b) Index numbers in this table have been recompiled to reflect the change to a quarterly collection basis from June 1997.

(c) This quarter affected by the removal of the Wholesale Sales Tax from 1 July 2000.

Source: *Price Index of Materials Used in Other than House Building, Six State Capital Cities (Cat. no. 6407.0)*.

	<i>Dairy products(a)</i>			<i>Staff hours worked</i>	
	<i>Whole milk(b)</i>	<i>Factory butter(c)</i>	<i>Factory cheese</i>	<i>Textile manufacturing(d)</i>	<i>Vegetable preserving</i>
	<i>million litres</i>	<i>tonnes</i>	<i>tonnes</i>	<i>'000</i>	<i>'000</i>
1997-98	542.8	8 745	26 835	1 125	1 128
1998-99	603.4	11 546	29 973	1 061	1 084
1999-2000	608.6	8 209	33 344	1 032	1 019
2000					
February	51.7	378	3 473	96	90
March	47.3	608	3 804	103	92
April	38.0	363	2 857	75	88
May	29.7	232	983	107	107
June	17.5	465	683	83	90
July	r 12.9	r 207	r 309	82	80
August	r 26.1	r 163	r 1 123	100	97
September	r 62.0	269	3 284	75	62
October	71.0	896	3 681	97	62
November	84.1	1 082	3 813	96	100
December	72.9	1 108	3 877	60	86
2001					
January	62.1	n.y.a.	n.y.a.	50	65
February	n.y.a.	n.y.a.	n.y.a.	83	97
		<i>Refined zinc</i>	<i>Metallurgical refining</i>	<i>Electricity(f)</i>	
		<i>'000 tonnes</i>	<i>Index(e)</i>	<i>million kW.h</i>	
1997-98		197.0	116.6	9 700	
1998-99		214.3	125.0	9 910	
1999-2000		231.7	133.2	10 050.0	
2000					
February		18.6	126.4	..	
March		19.6	141.2	(Mar qtr) 2 360	
April		18.7	133.8	..	
May		18.7	136.4	..	
June		18.7	137.2	(June qtr) 2 620	
July		20.6	144.0	..	
August		21.0	143.8	..	
September		18.0	134.3	(Sept qtr) 2 760	
October		20.5	145.1	..	
November		18.5	136.2	..	
December		12.5	126.0	(Dec qtr) 2 410	
2001					
January		20.1	140.3	..	
February		18.8	136.1	..	

(a) Source: Australian Dairy Corporation.

(b) Includes the whole milk equivalent of farm cream intake.

(c) Includes butter equivalent of butter oil.

(d) Includes spinning, weaving and carpet making. Reported by establishments which manufacture textiles only, or manufacture clothing and textiles in the one plant.

(e) Metallurgical refining index (Base year: 1979-80 = 100.0). Output from selected establishments covering the smelting and refining of ferro-alloys, zinc and aluminium. The weighting pattern is based on the establishments' value added as derived from the 1979-80 manufacturing Census. For multi product establishments, value added was apportioned to products on the basis of gross receipts from each product.

(f) Collected on a quarterly basis as from 1997.

Source: ABS data available on request.

20

LIVESTOCK SLAUGHTERING

	Cattle					
	<i>Bulls, bullocks and steers</i>	<i>Cows and heifers</i>	<i>Calves</i>	<i>Sheep</i>	<i>Lambs</i>	<i>Pigs</i>
	'000	'000	'000	'000	'000	'000
1997-98	93.4	123.6	53.9	461.0	423.3	78.1
1998-99	94.8	116.3	61.0	439.9	480.1	81.2
1999-2000	109.0	108.9	62.1	589.9	456.3	70.1
2000						
February	9.3	10.1	0.2	68.0	46.0	5.3
March	11.7	11.1	0.8	76.4	55.5	6.8
April	8.3	8.5	1.4	53.1	32.3	4.9
May	9.0	11.6	1.7	48.2	37.5	5.7
June	9.1	12.9	0.9	51.5	44.1	6.7
July	7.0	6.7	1.2	23.0	36.2	5.0
August	5.7	3.7	15.2	17.9	39.1	4.8
September	6.2	4.3	22.9	18.7	37.9	4.8
October	5.9	5.8	5.6	24.3	32.2	4.1
November	7.1	6.9	0.9	20.7	31.0	4.0
December	9.4	9.6	0.2	35.0	40.7	5.3
2001						
January	8.8	7.7	0.2	41.0	32.1	3.8
February	9.5	9.2	0.1	47.6	33.1	4.2

Source: ABS data available on request.

21

LIVESTOCK SLAUGHTERING: SEASONALLY ADJUSTED(a) AND TREND(b)

	Seasonally adjusted			Trend		
	<i>Cattle and calves</i>	<i>Sheep and lambs</i>	<i>Pigs</i>	<i>Cattle and calves</i>	<i>Sheep and lambs</i>	<i>Pigs</i>
	'000	'000	'000	'000	'000	'000
2000						
February	23.9	85.9	6.0	23.6	85.0	5.7
March	26.1	93.5	5.8	23.5	85.8	5.6
April	20.1	82.4	5.4	22.9	86.5	5.5
May	22.1	85.2	5.2	21.7	87.2	5.3
June	22.2	92.0	5.1	20.4	86.9	5.2
July	18.6	75.3	5.1	19.2	85.5	5.0
August	16.2	89.1	4.6	18.4	82.7	4.9
September	19.6	84.5	5.1	18.2	78.6	4.8
October	18.3	79.2	4.9	18.6	73.4	4.7
November	17.9	50.8	4.1	19.2	68.3	4.7
December	20.4	69.2	5.0	20.0	63.8	4.6
2001						
January	22.4	58.5	4.4	20.8	60.5	4.6
February	21.1	61.3	4.9	21.5	57.3	4.6

(a) Seasonally adjusted factors are reviewed annually to take account of each additional year's original data. The results of the review are used to compile revised seasonally adjusted and trend estimates; see Notes page 2.

(b) ABS trend estimates for the most recent months are revised; see Notes page 2.

Source: ABS data available on request.

22

MEAT PRODUCTION(a)

	Beef	Veal	Mutton	Lamb	Pigmeat(b)	Total
	tonnes	tonnes	tonnes	tonnes	tonnes	tonnes
1997-98	53 064	1 149	9 841	8 072	4 916	77 041
1998-99	53 271	1 241	8 724	9 222	5 242	77 700
1999-2000	57 557	1 236	11 796	8 833	4 403	83 825
2000						
February	5 154	7	1 364	884	333	7 741
March	6 091	20	1 518	1 071	425	9 125
April	4 455	31	1 052	619	308	6 465
May	5 317	37	949	729	366	7 399
June	5 529	20	1 012	867	436	7 863
July	3 581	26	445	693	324	5 068
August	2 528	293	338	771	299	4 230
September	2 884	444	363	737	304	4 733
October	3 181	112	478	617	257	4 646
November	3 908	21	415	595	254	5 194
December	5 200	8	717	780	325	7 030
2001						
January	4 511	7	826	612	235	6 191
February	4 980	5	948	636	253	6 821

(a) Carcass weight.

(b) Includes pork used for production of bacon and ham.

Source: ABS data available on request.

23

PRINCIPAL MINERAL CONCENTRATES PRODUCED

	Copper	Iron (pellets)	Lead	Lead-zinc	Tin	Zinc
	'000 tonnes	'000 tonnes	'000 tonnes	'000 tonnes	'000 tonnes	'000 tonnes
1997-98	109.6	820.8	84.6	26.2	16.2	335.4
1998-99	113.5	1 816.1	101.8	12.6	12.5	382.3
1999-2000	104.3	2 068.3	98.7	7.9	14.8	311.9
1998						
December	29.9	478.2	26.1	3.2	4.0	95.3
1999						
March	30.5	481.2	29.5	2.5	3.7	97.1
June	27.3	403.4	24.7	1.5	3.6	98.0
September	27.5	479.5	28.4	2.7	3.9	94.8
December	26.9	568.2	28.1	2.5	4.0	86.2
2000						
March	26.2	517.7	22.4	1.4	3.3	70.4
June	23.8	502.9	19.8	1.3	3.6	60.4
September	21.6	544.2	7.7	—	3.2	26.8
December	24.9	500.7	9.7	—	3.4	29.4

Source: Mineral Resources Tasmania, Department of Infrastructure, Energy and Resources.

SAWMILLS AND PLYWOOD MILLS, LOGS DELIVERED AND TIMBER PRODUCED

	Tasmanian-grown logs delivered					Sawn, peeled and sliced timber produced(a)				
	Eucalypts	Hardwoods, excluding eucalypts(b)	Plant- ation(c)	Native soft- woods(d)	Total	Eucalypts	Hardwoods, excluding eucalypts(b)	Plant- ation(c)	Native soft- woods(d)	Total
		'000 m ³	'000 m ³	'000 m ³			'000 m ³	'000 m ³	'000 m ³	
1997-98	496.8	24.3	357.7	1.6	880.3	171.1	5.3	167.3	0.4	344.2
1998-99	499.9	22.6	351.9	1.0	875.4	159.7	5.1	169.7	0.3	334.8
1999-2000	510.1	28.8	396.2	0.9	936.9	169.7	5.3	190.6	0.4	366.0
1998										
December	134.6	2.9	81.3	0.2	218.9	40.8	1.2	42.5	0.1	84.7
1999										
March	110.8	9.7	90.7	0.2	211.4	35.4	0.8	42.6	—	78.9
June	124.6	6.1	91.3	0.3	222.3	39.6	1.7	43.1	0.1	84.5
September	136.0	6.3	109.4	0.2	252.0	46.2	1.3	49.1	0.1	96.8
December	132.5	5.1	87.8	0.2	225.6	45.8	1.5	46.5	0.1	93.9
2000										
March	104.3	10.0	100.7	0.4	215.3	37.8	1.3	47.8	0.1	87.0
June	137.3	7.3	98.2	0.2	243.1	39.8	1.3	47.3	0.1	88.3
September	130.7	5.0	103.8	0.3	239.9	42.4	1.7	46.6	0.1	90.9
December	118.1	4.3	82.7	0.2	205.2	41.6	1.3	41.4	—	84.3

(a) Includes plywood, veneer and sliced timber production converted to an equivalent cubic measurement.

(b) Includes blackwood, myrtle, sassafras etc.

(c) Radiata pine.

(d) Includes Huon pine, celery top pine and King William pine.

Source: ABS data available on request.

25

CHIPPING AND GRINDING OF WOOD(a)

	Producing locations(b)	Materials used(c)			Chipped and ground wood production '000 tonnes green weight
		no.	Logs delivered(d) '000 m ³	Sawmill offcuts '000 m ³	
1997-98		28	3 998.1	457.9	4 440.1
1998-99		29	3 459.6	373.4	3 929.9
1999-2000		30	4 526.8	452.5	5 145.3
1998					
December		29	798.3	112.0	889.5
1999					
March		29	862.9	79.2	997.7
June		29	925.9	94.9	1 061.1
September		30	1 056.8	134.1	1 225.3
December		30	1 103.8	96.4	1 207.3
2000					
March		30	1 152.1	104.6	1 308.7
June		30	1 214.1	117.4	1 404.0
September		31	1 259.5	104.0	1 451.7
December		30	1 328.2	120.3	1 420.6

(a) Both hardwoods and softwoods, separate details are not available.

(b) Capable of producing at end of year or actually producing during quarter.

(c) Data reported by weight, converted to cubic measure by the factor of 0.95 m³ per tonne.

(d) Includes log equivalent of limbwood and billets.

Source: ABS data available on request.

26

LOGS DELIVERED FOR MILLING OR CHIPPING

	Sawmilling and plywood milling			Chipping and grinding(a)			Total		
	Crown land(b)	Private land	Total	Crown land(b)	Private land	Total	Crown land(b)	Private land	Total
	'000 m ³	'000 m ³	'000 m ³	'000 m ³	'000 m ³	'000 m ³	'000 m ³	'000 m ³	'000 m ³
1997-98	750.7	129.6	880.3	1 894.9	2 103.1	3 998.1	2 645.7	2 232.7	4 878.3
1998-99	754.2	121.2	875.4	1 562.6	1 897.0	3 459.6	2 316.7	2 018.2	4 334.9
1999-2000	834.4	101.6	935.9	2 440.5	2 086.3	4 526.8	3 274.9	2 187.8	5 462.7
1998									
December	185.5	33.4	218.9	422.4	375.9	798.3	607.9	409.3	1 017.2
1999									
March	184.1	27.3	211.4	367.0	495.8	862.9	551.1	523.2	1 074.3
June	196.2	26.1	222.3	432.1	493.8	925.9	628.3	519.9	1 148.2
September	221.8	30.2	252.0	554.0	502.7	1 056.8	775.8	532.9	1 308.7
December	202.5	23.1	225.6	643.1	460.7	1 103.8	845.6	483.8	1 329.4
2000									
March	192.1	23.2	215.3	585.3	566.9	1 152.1	777.3	590.1	1 367.4
June	218.0	25.1	243.1	658.1	555.9	1 214.1	876.1	581.0	1 457.1
September	219.7	20.2	239.9	729.7	529.8	1 259.5	949.4	550.1	1 499.4
December	184.3	20.9	205.2	779.7	548.5	1 328.2	964.0	569.5	1 533.5

(a) Logs used are generally below sawmilling standard: includes log equivalent of limbwood and billets.

(b) Comprises all areas (including concession areas) from which royalties are payable to Forestry Tasmania.

Source: ABS data available on request.

							<i>Value(e)</i>		
	<i>Dwelling units</i>				<i>New dwelling units</i>	<i>Alterations and additions to residential buildings(c)</i>	<i>Non-residential buildings(d)</i>		<i>Total of all building</i>
	<i>New houses</i>	<i>New other residential buildings(a)</i>	<i>Other dwelling units created (conversions etc.) (b)</i>	<i>Total dwelling units</i>			<i>Private</i>	<i>Total</i>	
<i>no.</i>	<i>no.</i>	<i>no.</i>	<i>no.</i>	<i>\$m</i>	<i>\$m</i>	<i>\$m</i>	<i>\$m</i>	<i>\$m</i>	
1997-98	1 419	219	5	1 643	142.4	38.4	82.8	125.5	306.3
1998-99	1 297	104	9	1 410	131.2	36.8	115.8	174.6	342.6
1999-2000	1 608	230	55	1 893	193.4	50.7	120.7	160.6	404.7
2000									
February	135	33	—	168	16.4	4.3	20.7	21.4	42.2
March	149	14	3	166	17.5	4.1	7.0	9.8	31.4
April	122	12	2	136	13.8	3.9	2.3	8.0	25.7
May	159	45	29	233	25.7	8.0	10.7	17.1	50.8
June	84	4	3	91	10.3	4.3	6.4	16.7	31.2
July	83	—	1	84	7.9	2.6	4.3	7.3	17.7
August	82	—	1	83	8.9	4.1	4.7	10.7	23.7
September	100	19	—	119	12.7	2.2	21.5	23.2	38.1
October	105	16	—	121	13.5	4.5	9.5	12.6	30.7
November	112	4	—	116	12.2	3.5	9.6	13.1	28.8
December	53	4	—	57	6.3	3.2	9.4	12.4	22.0
2001									
January	89	2	2	93	9.5	3.3	1.9	16.5	29.4
February	76	23	—	99	10.2	3.8	2.9	3.7	17.7

(a) New individual dwelling units (e.g. flats, home units and villa units).

(b) From alterations and additions to residential building, conversions of non-residential building to residential building etc.

(c) Valued at \$10,000 and over. Includes conversions and dwelling units approved as part of alterations and additions or as part of the construction of non-residential building.

(d) Comprises non-residential building (new plus alterations and additions) valued at \$50,000 and over.

(e) Value data from July 2000 reference month onward are recorded inclusive of GST. See Cat. no. 8731.0 or page 2 of this publication for more details.

Source: *Building Approvals, Australia* (Cat. no. 8731.0).

	Total number of dwellings(a)			Total value of commitments(b)		
	Original	Seasonally adjusted	Trend	Original	Seasonally adjusted	Trend
	no.	no.	no.	\$m	\$m	\$m
2000						
February	850	838	798	71	69	66
March	880	794	821	73	65	67
April	751	790	871	61	68	70
May	1 135	982	932	87	75	73
June	946	978	987	71	77	76
July	1 101	1 134	1 031	81	82	79
August	1 147	1 049	1 066	86	81	80
September	948	1 015	1 086	71	75	80
October	1 075	1 073	1 089	78	78	78
November	1 162	1 082	1 083	83	79	76
December	1 095	1 228	1 068	75	80	73
2001						
January	899	1 017	1 043	58	64	71
February	875	884	1 018	65	65	68

(a) Includes new dwellings, established dwellings and refinancing. Excludes alterations and additions.

(b) Commitment is a firm offer of housing finance. It either has been, or is normally expected to be, accepted. Includes commitments to provide housing finance to employees and commitments accepted and cancelled in the same month. Excludes alterations and additions. Includes refinancing.

Source: Housing Finance for Owner Occupation, Australia (Cat. no. 5609.0).

	ASSET				INDUSTRY		
	Buildings and structures	Equipment, plant and machinery	Total asset	Mining	Manufacturing	Other selected industries	Total all industries
	\$m	\$m	\$m	\$m	\$m	\$m	\$m
1997-98	169	477	646	85	239	322	646
1998-99	130	345	475	48	144	283	475
1999-2000	70	385	456	53	128	275	456
1998							
December	25	70	95	8	28	59	95
1999							
March	30	85	115	10	38	67	115
June	35	89	124	13	44	67	124
September	14	83	97	10	35	52	97
December	15	98	114	8	33	73	114
2000							
March	14	74	88	14	25	49	88
June	28	130	157	20	36	101	157
September r	30	100	130	35	35	61	130
December	25	116	141	15	40	86	141

(a) Estimates based on a sample survey and therefore subject to sampling variability. Covers selected industries only — mining, manufacturing, finance, property and other selected industries.

(b) Current prices.

(c) See Cat. no. 5646.0 or page 2 of this issue on the impacts of The New Tax System (TNTS) introduced on 1 July 2000.

Source: Private New Capital Expenditure, State Estimates (Cat. no. 5646.0).

	<i>Deposits</i>				
	<i>Current bearing interest</i>	<i>Current not bearing interest</i>	<i>Fixed</i>	<i>Investment savings accounts</i>	<i>Statement savings accounts</i>
	<i>\$m</i>	<i>\$m</i>	<i>\$m</i>	<i>\$m</i>	<i>\$m</i>
2000					
February	862	260	1 039	595	282
March	878	276	1 106	593	283
April	863	282	1 113	587	284
May	1 088	268	1 108	429	249
June	1 241	274	1 108	299	226
July	1 250	264	1 202	275	228
August	1 280	259	1 222	280	243
September	1 271	270	1 198	281	244
October	1 298	279	1 228	280	247
November	1 270	284	1 154	277	249
December	1 329	308	1 196	276	251
2001					
January	1 319	296	1 243	275	248
February	1 300	273	1 236	275	249

	<i>Deposits</i>			
	<i>Passbook/school savings accounts</i>	<i>Other</i>	<i>Total</i>	<i>Loans(b)</i>
	<i>\$m</i>	<i>\$m</i>	<i>\$m</i>	<i>\$m</i>
2000				
February	82	82	3 202	5 039
March	81	82	3 301	5 056
April	80	83	3 292	5 021
May	54	84	3 281	5 116
June	37	84	3 269	5 128
July	39	83	3 341	5 229
August	39	86	3 408	5 143
September	40	89	3 392	5 099
October	39	88	3 459	5 103
November	39	85	3 359	5 147
December	39	85	3 484	5 195
2001				
January	39	87	3 508	5 222
February	39	91	3 463	5 254

(a) Details are the averages of weekly figures for each month. The figures are derived from returns submitted by banks authorised under the Banking Act together with similar returns voluntarily submitted by the State banks; they exclude the Reserve Bank.

(b) Excludes non-resident loans.

Source: Reserve Bank of Australia.

	<i>Establish- ments</i>	<i>Guest rooms</i>	<i>Bed spaces</i>	<i>Persons employed</i>	<i>Room nights occupied</i>	<i>Room occupancy rate</i>	<i>Guest nights</i>	<i>Bed occupancy rate</i>	<i>Guest arrivals</i>	<i>Takings from accommodation(c)</i>
	<i>no.</i>	<i>no.</i>	<i>no.</i>	<i>no.</i>	<i>'000</i>	<i>%</i>	<i>'000</i>	<i>%</i>	<i>'000</i>	<i>\$'000</i>
LICENSED HOTELS WITH FACILITIES										
1999										
December qtr	55	2 929	8 071	3 074	150.1	56.2	241.8	32.8	139.5	12 201
2000										
October	n.a.	n.a.	n.a.	n.a.	45.4	50.4	71.2	28.7	40.0	4 396
November	n.a.	n.a.	n.a.	n.a.	51.8	59.4	82.3	34.3	47.0	4 777
December	n.a.	n.a.	n.a.	n.a.	44.5	49.4	78.5	31.6	44.8	4 246
December qtr	54	2 906	8 007	2 880	141.7	53.0	232.0	31.5	131.8	13 420
MOTELS AND GUEST HOUSES WITH FACILITIES										
1999										
December qtr	51	1 752	5 431	735	84.2	52.2	161.6	32.3	96.0	6 822
2000										
October	n.a.	n.a.	n.a.	n.a.	25.9	49.8	47.5	29.3	26.5	2 160
November	n.a.	n.a.	n.a.	n.a.	29.4	58.4	54.6	34.8	31.3	2 464
December	n.a.	n.a.	n.a.	n.a.	25.0	48.1	50.5	31.2	29.7	2 228
December qtr	49	1 677	5 226	693	80.3	52.0	152.6	31.7	87.4	6 853
SERVICED APARTMENTS										
1999										
December qtr	24	865	3 487	419	50.0	62.9	104.2	32.5	47.7	5 264
2000										
October	n.a.	n.a.	n.a.	n.a.	15.2	55.8	31.8	31.8	12.9	1 710
November	n.a.	n.a.	n.a.	n.a.	16.6	62.9	34.1	35.2	14.8	1 793
December	n.a.	n.a.	n.a.	n.a.	15.8	57.8	37.7	37.7	16.0	1 927
December qtr	25	879	3 225	426	47.6	58.8	103.6	34.9	43.8	5 430
TOTAL ESTABLISHMENTS										
1999										
December qtr	130	5 546	16 989	4 228	284.3	56.0	507.5	32.6	283.2	24 293
2000										
October	n.a.	n.a.	n.a.	n.a.	86.5	51.1	150.6	29.5	79.4	8 267
November	n.a.	n.a.	n.a.	n.a.	97.7	59.6	171.0	34.6	93.1	9 034
December	n.a.	n.a.	n.a.	n.a.	85.2	50.3	166.6	32.7	90.5	8 401
December qtr	128	5 462	16 458	3 999	269.5	53.6	488.2	32.2	262.9	25 702

(a) Comprising establishments with 15 or more rooms or units. For explanation of terms and concepts refer to *Tourist Accommodation, Australia* (Cat. no. 8635.0).

(b) For the four quarters of 2000, the scope of the Survey of Tourist Accommodation (STA) has been expanded. Over this period the following accommodation sectors will be covered: hotels, motels, guest houses and serviced apartments with 15 or more rooms; holiday flats, units and houses operated by owners, managers or real estate agents who have sole letting rights to at least 15 flats, units or houses for short term letting; caravan parks with 40 or more powered sites, cabins, etc; and visitor hostels with 25 or more bed spaces.

(c) Takings from accommodation after 1 July 2000 are recorded inclusive of GST. See Cat. no. 8635.0 or page 2 of this publication for more details.

Source: *Tourist Accommodation, Australia* (Cat. no. 8635.0). For more detailed information, see *Tourist Accommodation, Small Area Data, Tasmania* (Cat. no. 8635.6.40.001).

32

NATIONAL PARKS, PERSON ENTRIES(a)

Tasmanian National Park attendance

	<i>Cradle Mountain(b)</i> <i>(Lake Dove)</i>	<i>Lake St Clair(b)</i> <i>(Cynthia Bay)</i>	<i>Freycinet(b)</i>	<i>Mt Field(b)</i>	<i>Narawntapu(c)</i> <i>(Bakers Beach)</i>	<i>Mole Creek Karst(d)</i> <i>(Marakoopa Cave)</i>	<i>Maria Island(e)</i> <i>(Darlington)</i>
	<i>no.</i>	<i>no.</i>	<i>no.</i>	<i>no.</i>	<i>no.</i>	<i>no.</i>	<i>no.</i>
1999–2000	200 700	111 600	308 500	130 700	33 200	29 460	13 213
2000							
March	21 800	15 000	31 700	13 500	3 300	2 750	1 642
April	23 000	13 100	44 000	14 000	2 600	3 225	1 615
May	8 300	5 500	21 700	5 600	1 100	1 350	603
June	8 600	3 300	17 400	6 000	1 400	1 576	526
July	6 600	2 800	10 000	5 200	1 000	1 023	62
August	7 600	2 600	10 600	6 300	1 200	1 140	313
September	10 600	6 200	16 500	9 800	2 100	2 354	929
October	11 400	6 900	15 100	9 200	2 600	1 798	748
November	15 000	9 400	21 700	11 000	3 600	2 454	1 224
December	21 200	11 700	32 500	15 200	5 100	3 910	1 394
2001							
January	32 000	20 400	53 900	23 200	6 000	4 203	2 492
February	20 300	15 000	36 100	15 600	3 800	2 277	1 650
March	22 900	15 700	30 800	15 000	n.y.a.	n.y.a.	1 719

(a) A 'person entry' occurs whenever a visitor enters a National Park. Freycinet data, in particular, reflects repeat entries. Measurement occurs at the designated sites in brackets.

(b) Estimated through a combination of traffic and booth counts.

(c) Estimated through traffic counts.

(d) Number of people taken on a guided tour.

(e) The sum of ferry arrivals and estimated plane passengers.

Source: Tasmanian Parks and Wildlife Service, Department of Primary Industries, Water and Environment.

33

TRACKS IN NATIONAL PARKS, WALKER REGISTRATIONS(a)

	<i>Overland(b)</i>	<i>South Coast(c)</i>	<i>Freycinet(d)</i>	<i>Port Davey(c)</i>	<i>Frenchmans Cap</i>
	<i>no.</i>	<i>no.</i>	<i>no.</i>	<i>no.</i>	<i>no.</i>
1999–2000	7 240	1 011	2 784	272	807
2000					
March	1 039	133	317	26	110
April	704	60	282	25	58
May	111	2	39	—	15
June	104	1	65	—	20
July	p33	3	89	2	15
August	p55	—	35	—	5
September	p117	12	163	4	27
October	p146	p14	113	p 1	5
November	p584	p60	216	p 11	41
December	p1 193	p172	489	p 35	106
2001					
January	p1 637	p271	695	rp45	207
February	p1 385	p195	414	p44	n.y.a.
March	p1 089	p68	291	p28	n.y.a.

(a) Numbers include only walkers who registered and represented their intention.

(b) Sum of registrations at Cradle Mt and Lake St Clair. Registrations from July 2000 affected by trackhead relocation at Cradle Mt.

(c) Sum of registrations to walk the length of the track in any direction, irrespective of starting point.

(d) All overnight walkers registered in the park.

Source: Tasmanian Parks and Wildlife Service, Department of Primary Industries, Water and Environment.

	Passenger vehicles	Other vehicles(b)	Total (excl. motor cycles)	Vehicles registered by vehicle rental businesses(c)	Motor cycles
	no.	no.	no.	no.	no.
1997-98	13 232	2 740	15 972	2 544	542
1998-99	12 359	2 786	15 145	1 771	568
1999-2000	11 373	3 183	14 556	2 093	563
2000					
February	782	210	992	1	52
March	888	240	1 128	10	44
April	704	233	937	19	41
May	786	340	1 126	3	74
June	665	394	1 059	1	27
July	1 001	204	1 205	81	47
August	1 228	244	1 472	209	70
September	1 313	232	1 545	454	49
October	1 028	213	1 241	213	47
November	1 191	245	1 436	173	82
December	1 827	208	2 035	884	77
2001					
January	827	214	1 041	9	96
February	793	203	996	6	40

(a) Includes State and Commonwealth Government owned motor vehicles and other than those belonging to the defence services. Excludes tractors, plant and equipment, caravans and trailers.

(b) Comprises utilities, panel vans, rigid and articulated trucks and other truck type vehicles (i.e. motor vehicles designed for purposes other than freight carrying, e.g. campervans, tow trucks, ambulances and hearses) and buses.

(c) These figures are included in previous columns.

Source: ABS data available on request from datacube: 9303.0.55.001 New Motor Vehicle Registrations (NMVR), Australia, Main Data.

								Trend	
	Original	Food retailing	Clothing and soft good retailing	Household good retailing	Recreational good retailing	Hospitality and services	Total(d)		
							Change from corresponding month of previous year		
	\$m	\$m	\$m	\$m	\$m	\$m	\$m	%	
1997-98	3 149.4	1 351.1	184.9	320.3	214.0	435.4	3 150.3	..	
1998-99	3 170.1	1 353.2	185.2	337.9	200.9	434.8	3 177.5	..	
1999-2000	3 278.4	1 397.8	163.3	366.2	211.0	475.3	3 254.7	..	
2000									
February	257.4	117.8	13.0	30.1	17.5	41.4	270.3	0.8	
March	272.8	117.1	12.8	30.8	17.5	41.4	269.7	-0.2	
April	256.8	114.4	12.8	31.5	17.4	40.7	269.2	-0.9	
May	258.2	114.0	12.9	32.1	17.3	39.5	268.9	-1.2	
June	264.8	114.1	13.2	32.5	17.3	38.2	269.1	-1.2	
July	247.7	115.8	13.2	33.1	17.0	39.7	273.1	0.1	
August	261.6	117.0	13.6	32.9	17.0	38.9	274.1	0.3	
September	264.9	118.7	13.9	32.6	17.1	38.7	275.9	0.9	
October	274.7	120.5	14.1	32.7	17.2	38.8	278.0	1.8	
November	294.1	122.0	14.1	33.0	17.4	39.1	280.3	2.9	
December	372.5	123.3	14.1	33.6	17.6	39.3	282.6	4.1	
2001									
January	281.8	124.3	14.0	34.3	17.8	39.4	284.7	5.1	
February	263.1	125.1	14.0	35.0	17.9	39.6	286.6	6.0	

(a) Excludes motor vehicles, parts, petrol, etc.

(b) ABS retail seasonally adjusted and trend estimates for earlier periods are revised each month. See Cat. no. 8501.0 for more details.

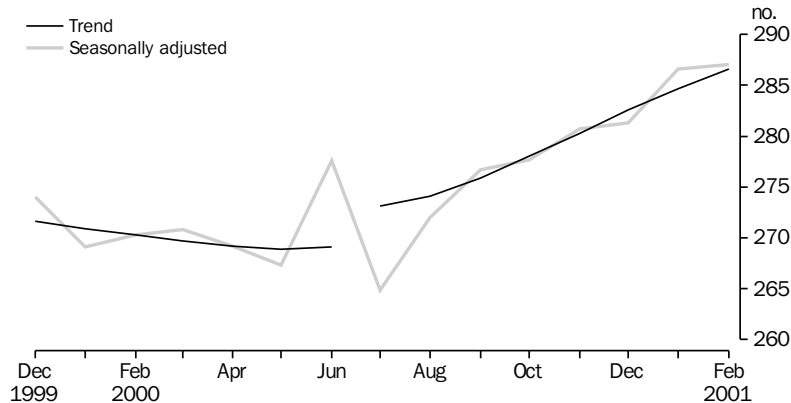
(c) Data from July 2000 reference month onwards are recorded inclusive of GST. See Cat. no. 8501.0 and page 2 of this publication for more details.

A break in the trend series occurred between June and July 2000 because of the impact of The New Tax System on Retail turnover.

(d) Includes Department stores and Other retailing.

Source: Retail Trade, Australia (Cat. no. 8501.0).

RETAIL TURNOVER, Tasmania



	Tasmania				Australia				
	Imports	Imports change over preceding period		Exports	Exports change over preceding period		Imports	Exports(b) change over preceding period	
		\$m	%		\$m	%		\$m	%
1997-98	385	-3	2 136	25	90 684	15	87 768	11	
1998-99	407	6	2 019	-5	97 611	8	85 991	-2	
1999-2000	440	8	2 215	10	110 078	13	97 286	13	
2000									
February	35	—	185	-20	8 653	7	8 233	21	
March	36	3	198	7	9 648	11	8 812	7	
April	33	-7	172	r-14	8 004	-17	8 271	-6	
May	58	73	286	67	10 370	30	9 219	12	
June	33	-43	175	-39	10 436	1	9 193	—	
July	47	44	165	-6	9 755	-7	9 367	2	
August	56	19	r182	r10	10 716	10	r9 374	—	
September	34	-40	167	-8	9 852	-8	r9 778	4	
October	37	12	r198	r19	11 154	13	r10 561	8	
November	59	58	282	r42	11 006	-1	r10 436	-1	
December	55	-7	220	-22	r9 250	-16	r10 293	-1	
2001									
January	45	-18	r192	-13	r9 231	—	r8 317	-19	
February	30	-33	172	-10	8 323	-10	9 212	11	

(a) It is difficult to get a complete picture of Tasmania's trade performance as imports recorded by the ABS include only goods imported directly into the State from overseas, and reported by the Australian Customs Service. Many of Tasmania's goods imported for direct consumption, or input into further processing industries, arrive via interstate ports, and are not included in this table.

(b) Includes re-exports.

Source: FASTRACCS.

37

MERCHANDISE EXPORTS, BY COUNTRY

	European Community				East Asia				Total all countries
	United States of America	United Kingdom	Total European Community	Japan	Korea	Taiwan	Hong Kong	ASEAN(a)	
1997-98	176 175	25 063	338 791	549 048	67 801	150 405	132 551	399 472	2 136 171
1998-99	235 787	28 691	278 037	466 626	101 177	150 071	152 533	353 441	2 019 182
1999-2000	202 831	19 228	309 082	489 037	133 553	207 233	201 348	383 690	2 214 523
2000									
February	r21 256	923	11 232	48 466	13 507	18 177	20 529	32 952	185 180
March	14 953	1 559	12 228	37 558	14 667	17 750	22 177	48 051	198 453
April	20 607	2 088	9 102	41 176	10 164	19 499	18 893	32 636	171 716
May	22 716	1 916	71 610	r53 804	r17 804	29 469	18 987	41 285	286 491
June	19 426	2 096	7 506	48 785	9 826	r18 445	17 196	r36 132	175 200
July	15 659	4 656	9 294	r37 751	9 225	12 890	r21 192	27 769	165 211
August	20 931	1 692	r5 910	48 365	17 824	r14 886	r20 108	r37 054	r181 850
September	r12 898	r4 164	r10 151	30 647	11 831	22 416	25 542	37 850	r166 864
October	r24 636	1 391	19 084	r45 132	16 749	15 747	9 212	34 823	r198 185
November	r12 959	7 233	r12 979	44 092	17 672	r24 775	r21 380	r36 420	r282 163
December	r10 636	4 155	r12 731	r70 167	r18 057	14 754	26 852	r31 862	r219 629
2001									
January	r19 608	r1 215	r9 211	r44 898	r10 220	21 266	r28 178	r27 291	r191 627
February	19 151	2 259	16 762	41 892	14 468	10 280	r16 157	29 683	172 088

(a) ASEAN member countries are: Brunei, Indonesia, Laos, Malaysia, Myanmar, Philippines, Singapore, Thailand and Viet Nam.

Source: FASTRACCS.

	<i>Meat and meat preparations</i>	<i>Dairy products</i>	<i>Fish, crustaceans and molluscs</i>	<i>Vegetables and fruit</i>	<i>Wood and woodchips</i>	<i>Textile fibres and wastes</i>	<i>Metallic ores and metal scrap</i>
	\$'000	\$'000	\$'000	\$'000	\$'000	\$'000	\$'000
1997-98	71 918	133 675	141 205	55 242	311 359	29 641	254 054
1998-99	65 026	102 709	136 268	54 907	296 164	24 999	278 001
1999-2000	88 298	64 573	145 484	44 689	303 340	22 358	242 584
2000							
February	r8 376	5 680	11 507	3 066	31 878	1 812	14 065
March	9 595	7 726	12 692	8 108	26 189	4 519	19 320
April	8 834	6 552	9 401	10 282	35 575	1 772	11 085
May	11 354	9 220	13 722	9 063	32 315	592	26 160
June	7 970	6 579	6 236	4 424	1 344	1 094	21 483
July	6 308	7 649	15 963	4 218	3 836	1 363	r20738
August	5 830	5 267	15 700	3 506	3 521	534	12 968
September	4 152	6 875	16 804	1 408	2 665	2 927	10 318
October	5 197	10 689	11 135	969	2 551	2 834	r25 257
November	7 518	10 720	16 278	354	r386	2 092	14 012
December	7 784	r10 485	21 256	596	r4 901	3 258	33 832
2001							
January	r9 155	r8 675	r17 421	r904	2 109	1 423	12 862
February	8 789	10 073	12 141	2 513	184	722	17 031
	<i>Medical and pharmaceutical products</i>	<i>Paper and paperboard</i>	<i>Iron and steel</i>	<i>Non-ferrous metals</i>	<i>Road vehicles and transport equipment</i>	<i>Other and combined confidential items</i>	<i>Total all commodity groups</i>
	\$'000	\$'000	\$'000	\$'000	\$'000	\$'000	\$'000
1997-98	34 755	21 222	76 463	557 126	280 251	169 261	2 136 171
1998-99	52 330	4 130	95 265	544 311	173 015	192 057	2 019 182
1999-2000	67 353	9 932	10 216	681 903	213 836	319 958	2 214 523
2000							
February	6 425	1 704	178	68 007	636	31 846	185 180
March	8 343	1 518	r322	74 371	1 333	24 418	198 453
April	8 133	773	100	55 293	1 520	22 397	171 716
May	6 711	1 664	694	r63 632	64 934	46 429	286 491
June	5 613	596	782	64 109	521	54 450	175 200
July	7 800	377	458	47 490	251	r48 761	165 211
August	10 757	594	234	61 675	136	r61 127	r181 850
September	7 097	364	r295	62 659	397	r50 903	r166 864
October	10 686	228	r161	r61 649	1 017	r65 813	r198 185
November	12 732	310	237	74 040	89 019	r54 466	r282 163
December	3 576	58	262	r74 769	4 585	r54 268	r219 629
2001							
January	8 551	145	275	r71 212	1 514	r57 383	r191 627
February	9 436	73	373	65 677	2 046	43 030	172 088

Source: FASTTRACCS

	NSW	Vic.	Qld	SA	WA	Tas.	Aust.(a)
Population							
Estimated resident population, June 2000 ('000) p	6 463.5	4 765.9	3 566.4	1 497.6	1 883.9	470.4	19 157.0
Proportion of Australian population, June 2000 (%) p	33.7	24.9	18.6	7.8	9.8	2.5	100.0
Population growth rate, 12 months to June 2000 (%) p	1.0	1.2	1.7	0.4	1.4	-0.1	1.2
Labour force							
Employment growth, 12 months to March 2001 (trend series) (%)							
Males	-0.9	3.8	-0.6	-2.6	0.4	1.8	0.5
Females	1.8	2.9	2.9	1.7	3.1	0.1	2.3
Persons	0.2	3.4	0.9	-0.8	1.6	1.1	1.3
Unemployment rate (trend series), March 2001 (%)	6.0	6.4	8.8	7.3	6.9	8.9	6.8
Unemployment growth, 12 months to March 2001 (trend series) (%)	2.3	-2.6	11.2	-12.9	7.6	-1.5	2.2
Participation rate (trend series), March 2001 (%)	62.0	64.0	65.0	59.8	67.2	59.2	63.6
Job vacancy rate, February 2000 (%)	1.4	1.4	0.8	1.2	1.4	1.2	1.3
Working days lost through industrial disputes, 12 months to January 2001 (days per '000 employees)	63	67	62	27	60	6	58
Wages and prices							
Average weekly total earnings, full-time adult employees (trend series) November 2000 (\$)							
Males	957.5	856.7	840.0	861.9	936.0	829.4	900.6
Females	759.9	737.8	688.5	702.9	709.7	677.3	735.7
Persons	883.5	815.6	788.3	803.6	858.2	776.8	840.9
Average weekly total earnings, full-time adult employees, growth (trend), 12 months to Nov '00 (%)	4.6	3.5	6.2	7.1	5.5	4.8	4.9
Consumer price index, all groups, annual growth to December qtr 2000 (%) (b)	6.0	5.9	6.0	5.4	5.0	5.8	5.8
Building							
% change in the number of total dwelling units approved (original),							
— in the 12 months ended February 2001, over the same period previous year	-31.5	-21.6	-21.9	-27.0	-34.6	-17.9	-27.1
— February 2000 to February 2001	-46.7	-32.7	-56.0	-56.3	-49.0	-41.1	-46.0
For footnotes see end of table.							...continued

	NSW	Vic.	Qld	SA	WA	Tas.	Aust.(a)
Private investment and retail trade							
% change in private new capital expenditure, 12 months ended December 2000, over the same period previous year (original)	7.9	-7.7	-3.4	28.9	-21.0	14.7	-2.1
% change in trend estimates turnover of retail establishments, February 2001 (change from corresponding month of the previous year)	7.8	6.5	8.5	7.7	0.5	6.0	7.0
Transport							
% change in number of new motor vehicles (excluding motorcycles) registered in the 12 months ended February 2001, over the same period previous year	-0.5	1.7	16.4	0.3	-1.5	2.3	2.8
Agriculture							
% change in the number of livestock slaughtered 12 months ended February 2001 over the same period previous year (original)							
Cattle and calves	-3.7	-2.3	5.1	11.1	0.8	-11.1	0.7
Sheep and lambs	6.4	14.1	7.9	16.9	12.2	-6.9	10.8
Tourism — room occupancy rates							
Hotels, motels & guest houses, & serviced apartments with facilities, December quarter 2000 (%)	58.7	59.4	60.6	56.8	57.2	53.6	58.8
Australian National and State Accounts							
% change in Domestic (State) Final Demand(c), Chain Volume measures (trend series)							
Sep qtr 2000 to Dec qtr 2000	-0.9	-0.1	-0.2	-0.2	-1.1	-1.2	-0.7
Dec qtr 1999 to Dec qtr 2000	1.0	1.6	1.0	2.0	-3.1	0.6	0.5

(a) Australian totals include the ACT and NT, with the exception of Agriculture, which excludes both.

(b) CPI applies to State capitals.

(c) Total of four types of expenditure: Private investment, Private consumption, Government investment, Government consumption.

	<i>Unit</i>	<i>Greater Hobart and Southern Statistical Divisions</i>	<i>Northern Statistical Division</i>	<i>Mersey-Lyell Statistical Division</i>	<i>Tasmania</i>
Area, at 30 June 1996	km2	25 521	19 935	22 507	67 964
Population					
Estimated resident population, 30 June 1996	no.	230 187	134 047	110 209	474 443
Estimated resident population, 30 June 1999	no.	228 855	133 016	108 390	470 261
Births 1999(a)	no.	2 937	1 717	1 345	6 032
Deaths 1999(a)	no.	1 823	1 111	834	3 783
Labour force (original), March 2001					
Total employed	no.	95 500	62 100	42 200	199 800
Total unemployed	no.	9 800	5 300	4 300	19 400
Unemployment rate	%	9.3	7.9	9.3	8.8
Participation rate	%	58.5	61.8	55.9	58.9
Schools, 2000(b)					
Government	no.	99	58	58	215
Non-government	no.	34	17	16	67
Full-time equivalent School students, 2000(b)					
Government					
Males	no.	15 415.8	9 395	7 805.3	32 616.1
Females	no.	14 865.6	9 492.4	7 597.5	31 955.5
Total	no.	30 281.4	18 887.4	15 402.8	64 571.6
Non-government					
Males	no.	5 825.2	2 479.1	2 022.2	10 326.5
Females	no.	6 132.9	2 423.5	1 919.2	10 475.6
Total	no.	11 958.1	4 902.6	3 941.4	20 802.1
Educational qualification, 1996 Census(c)					
Bachelor degree or higher(d)	no.	17 058	7 152	3 908	28 184
Undergraduate diploma	no.	5 893	3 268	2 181	11 374
Associate diploma	no.	3 773	1 902	1 466	7 184
Skilled vocational	no.	16 255	10 040	8 841	35 238
Basic vocational	no.	4 548	2 632	2 305	9 515
Agriculture					
Establishments with agricultural activity, 1998–99 season	no.	1 129	1 583	1 734	4 446
Total area of establishments	ha.	744 493	855 423	327 938	1 927 854
Crops, production, 1998–99 season					
Potatoes	tonnes	7 019	135 661	184 802	327 482
Onions	tonnes	949	13 527	45 996	60 471
Apples	tonnes	46 296	4 847	11 128	62 271
Barley	tonnes	8 180	19 327	2 537	30 044
Livestock, 1998–99 season					
Beef cattle	no.	77 760	191 042	222 641	491 443
Dairy cattle	no.	7 307	84 985	140 630	232 922
Sheep and lambs	no.	1 664 194	1 958 201	178 740	3 801 135
Pigs	no.	2 796	13 289	5 821	21 906
Gross value of agricultural production, 1998–99	\$m	147	249	305	700

For footnotes see end of table.

...continued

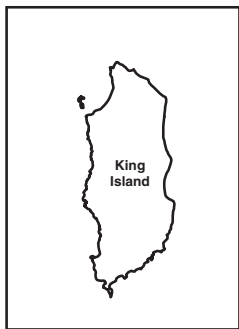
	<i>Unit</i>	<i>Greater Hobart and Southern Statistical Divisions</i>	<i>Northern Statistical Division</i>	<i>Mersey-Lyell Statistical Division</i>	<i>Tasmania</i>
Business locations, September 1998					
Locations with manufacturing activity					
Less than 20 employees	no.	424	327	257	1 008
20 or more employees	no.	83	67	48	198
Total	no.	507	394	305	1 206
Locations with retail activity					
Less than 20 employees	no.	2 046	1 346	1 133	4 525
20 or more employees	no.	82	43	35	160
Total	no.	2 128	1 389	1 168	4 685
Building, 1999–2000					
Total dwelling units approved	no.	1 037	537	319	1 893
Value of total residential building approved	\$'000	138 309	66 632	39 163	244 104
Value of total building approved	\$'000	226 094	115 050	63 554	404 699
Dwellings, Census 1996(d)					
Total dwellings	no.	98 815	57 467	45 529	201 820
Occupied private dwellings	no.	85 255	49 759	40 183	175 197
Fully owned	no.	34 338	21 563	18 359	74 260

(a) Births and deaths are based on usual residence year of registration. Total Tasmania includes usual residences other than Tasmanian Statistical Divisions.

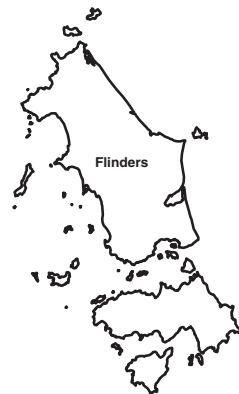
(b) Source: DETYA and Tasmanian Department of Education.

(c) Total includes migratory statistical division.

(d) Includes higher degree, postgraduate diploma and bachelor degree.



Statistical Divisions



Statistical Division NORTHERN

Local Government Area Dorset



Based on ASGC 1996
Prepared by: Demography Section, ABS Hobart
© Commonwealth of Australia, 1998

FOR MORE INFORMATION...

- INTERNET* **www.abs.gov.au** the ABS web site is the best place to start for access to summary data from our latest publications, information about the ABS, advice about upcoming releases, our catalogue, and Australia Now—a statistical profile.
- LIBRARY* A range of ABS publications is available from public and tertiary libraries Australia-wide. Contact your nearest library to determine whether it has the ABS statistics you require, or visit our web site for a list of libraries.
- CPI INFOLINE* For current and historical Consumer Price Index data, call 1902 981 074 (call cost 77c per minute).
- DIAL-A-STATISTIC* For the latest figures for National Accounts, Balance of Payments, Labour Force, Average Weekly Earnings, Estimated Resident Population and the Consumer Price Index call 1900 986 400 (call cost 77c per minute).

INFORMATION SERVICE

Data which have been published and can be provided within five minutes are free of charge. Our information consultants can also help you to access the full range of ABS information—ABS user-pays services can be tailored to your needs, time frame and budget. Publications may be purchased. Specialists are on hand to help you with analytical or methodological advice.

- PHONE* **1300 135 070**
- EMAIL* **client.services@abs.gov.au**
- FAX* 1300 135 211
- POST* Client Services, ABS, GPO Box 796, Sydney 1041

WHY NOT SUBSCRIBE?

ABS subscription services provide regular, convenient and prompt deliveries of ABS publications and products as they are released. Email delivery of monthly and quarterly publications is available.

- PHONE* 1300 366 323
- EMAIL* subscriptions@abs.gov.au
- FAX* 03 9615 7848
- POST* Subscription Services, ABS, GPO Box 2796Y, Melbourne 3001



2130360005013
ISSN 1034-1803

RRP \$20.00